

CAB ENCLOSURE KIT INSTRUCTIONS

Gradall 522D & 524D Starting S/N 0277001

Gradall 534-D6 & 534-DT

Gradall 534D-9 Starting S/N 05440010 Thru S/N 0160000853
Excluding S/N 0160000700

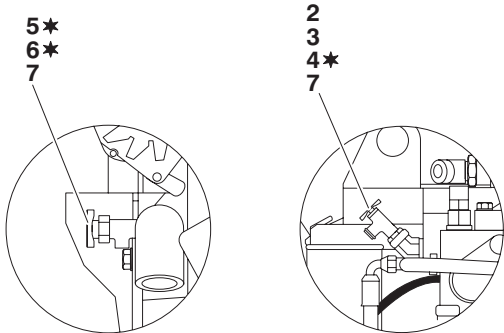
Gradall 534D-10 S/N 0366001 Thru S/N 0160000974

Gradall 544D S/N 0355001 Thru S/N 0455497 AND
S/N 0160000192 Thru S/N 0160012366
Excluding S/N 0160012298

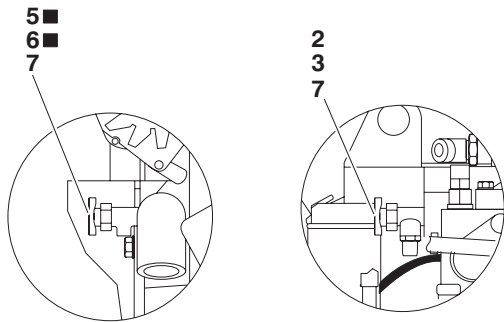
For Kit #91345003

NOTES:

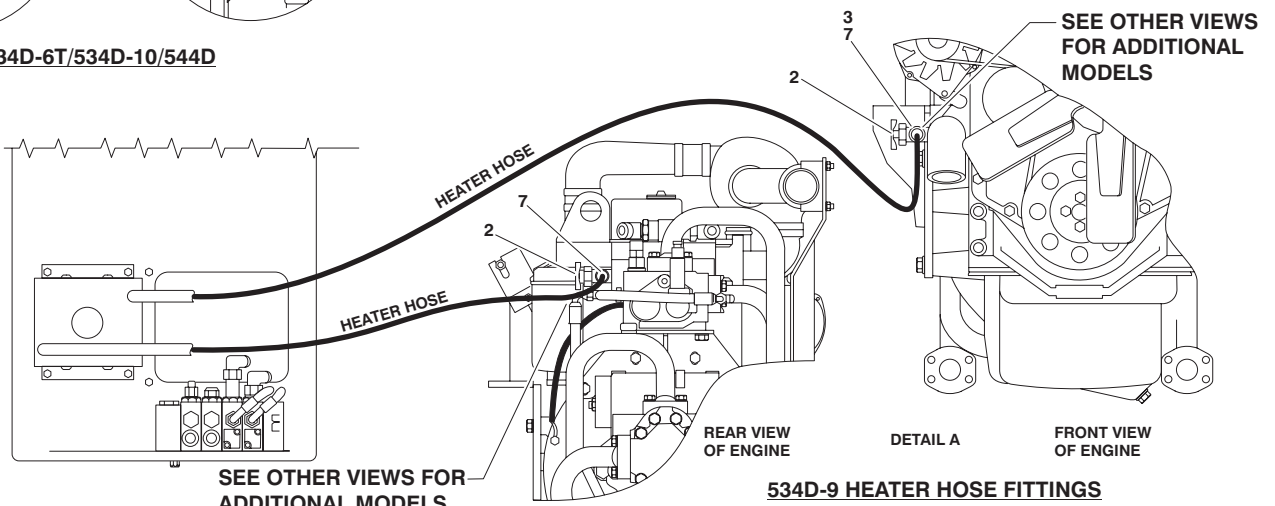
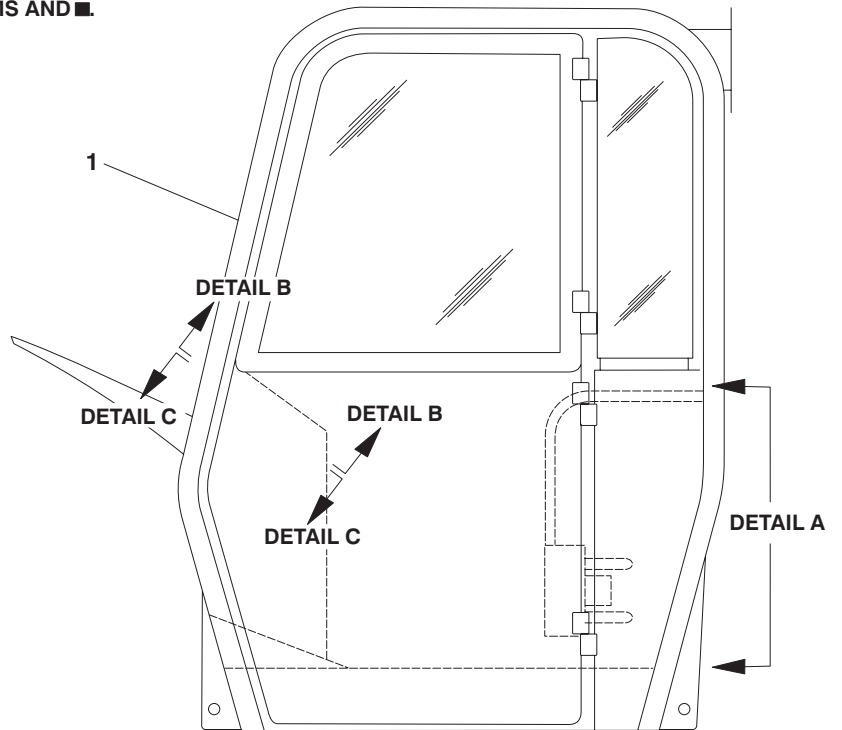
- ITEMS 2 THRU 7 ARE TO BE USED AS REQUIRED FOR THE INTENDED MODEL AS SPECIFIED. THIS WILL ALLOW ORDERING OF THIS KIT FOR ALL "D" MODELS.
- 522D/524D/534D-6/522D LO-PRO/524D LO-PRO INCLUDES ALL UNMARKED ITEMS AND *
534D-6T/534D-10/544D INCLUDES ALL UNMARKED ITEMS AND ■.
534D-9 INCLUDES ALL UNMARKED ITEMS.



522D/524D/534D-6/522D LO-PRO/524D LO-PRO



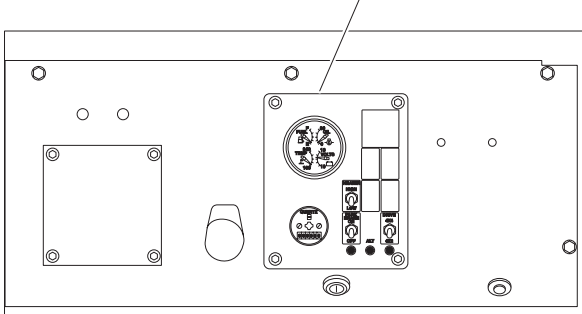
534D-6T/534D-10/544D



534D-9 HEATER HOSE FITTINGS

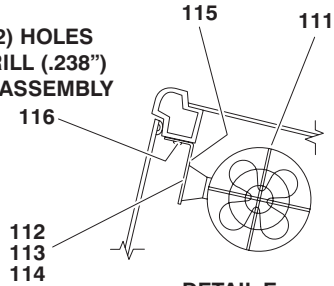
CAB ENCLOSURE COMPONENTS

SEE SHEET 4 OF 10
FOR REVISIONS TO
GAUGE PANEL



DETAIL D

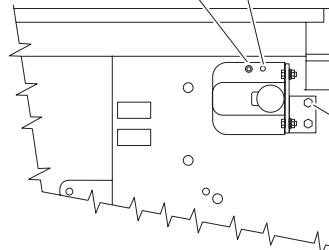
(2) HOLES
DRILL (.238")
AT ASSEMBLY



DETAIL E

ROUTE "WAS-WSW" WIRE FROM WIPER-HEATER
OPTION HARNESS UNDER DASH THRU FLOOR
PLATE OPENING, UNDER FLOOR PLATE, UNDER
SEAT, THRU GROMMET IN SEAT PLATE. ATTACH
FEMALE SPADE TO END OF WIRE, THEN
CONNECT TO WASHER BOTTLE.

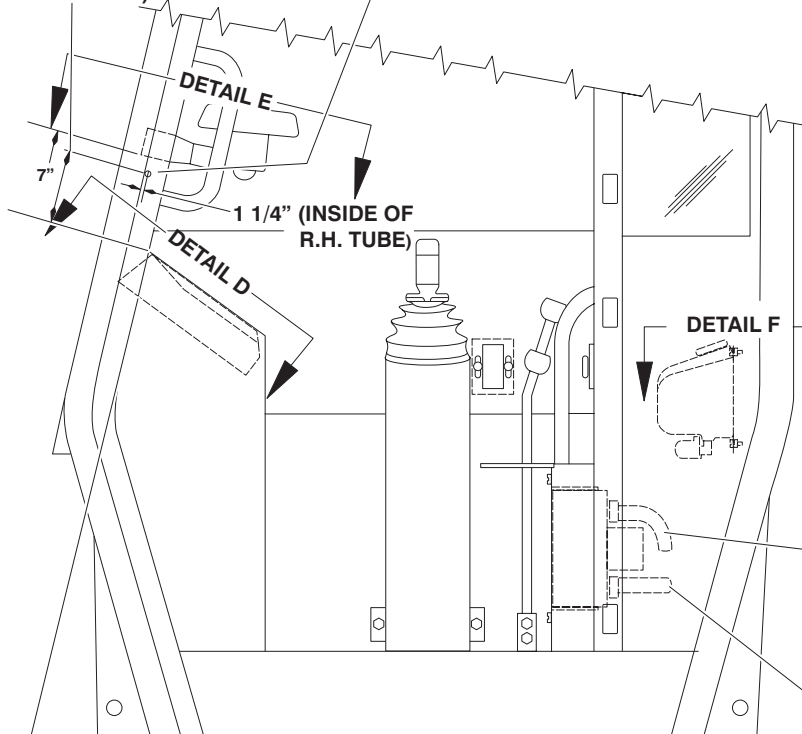
ROUTE WASHER TUBE FROM
WIPER THRU FLOOR PLATE
OPENING, UNDER FLOOR PLATE,
UNDER SEAT, THRU HOLE IN SEAT
PLATE TO WASHER BOTTLE.



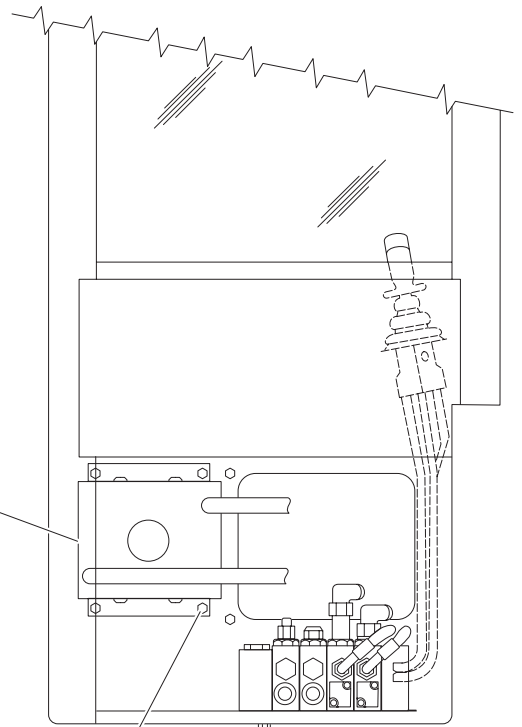
DETAIL F

6" (INSIDE OF
R.H. TUBE)

(1) HOLE 3/8"
DRILL AT ASSEMBLY

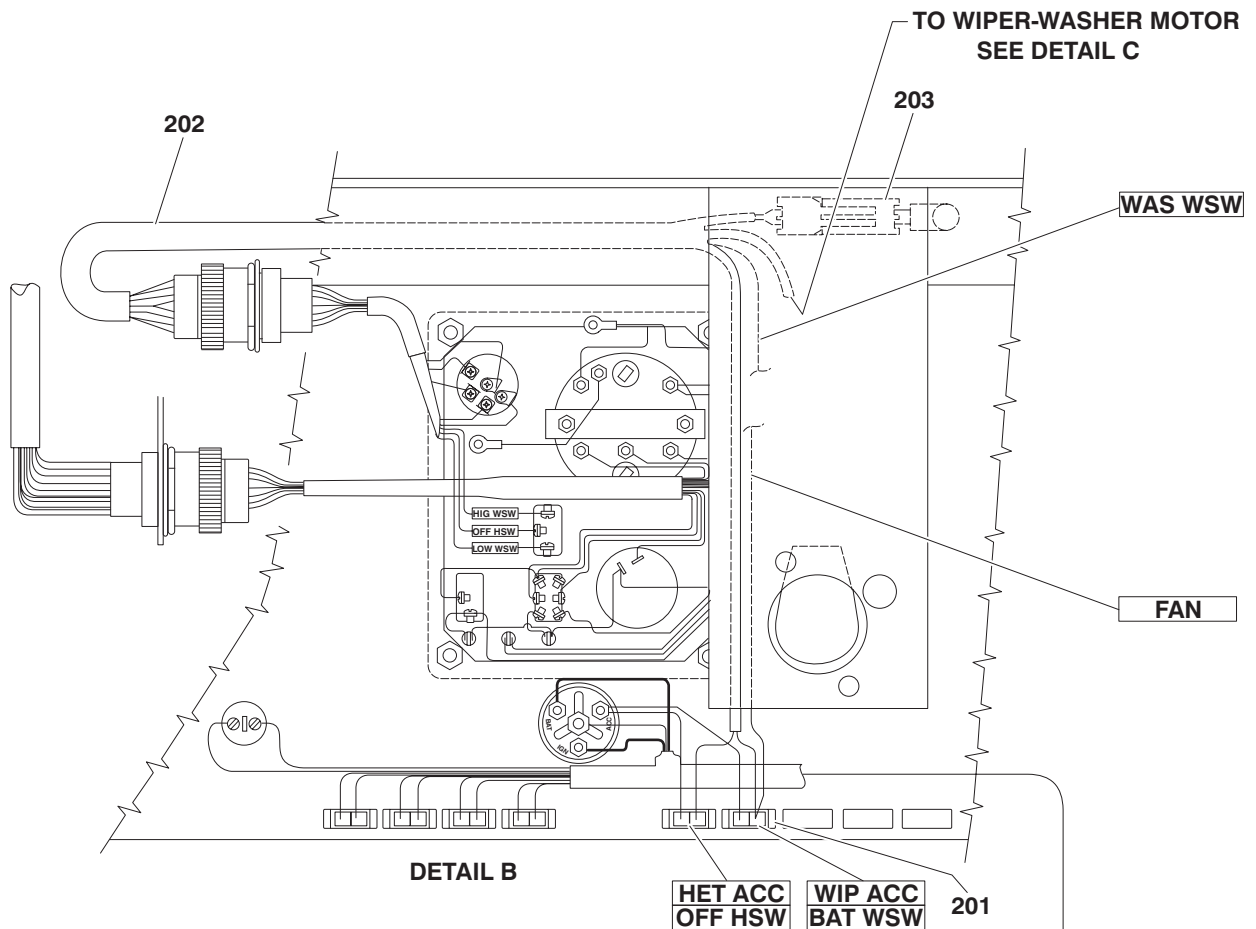


ROUTE "FAN" WIRE FROM WIPER-HEATER
OPTION HARNESS UNDER DASH THRU
EXISTING HOLE IN R.H. TUBE TO 3/8" DRILLED
HOLE AT FAN. CONNECT TO FAN WIRE WITH #109.



104
105

WIRING COMPONENTS

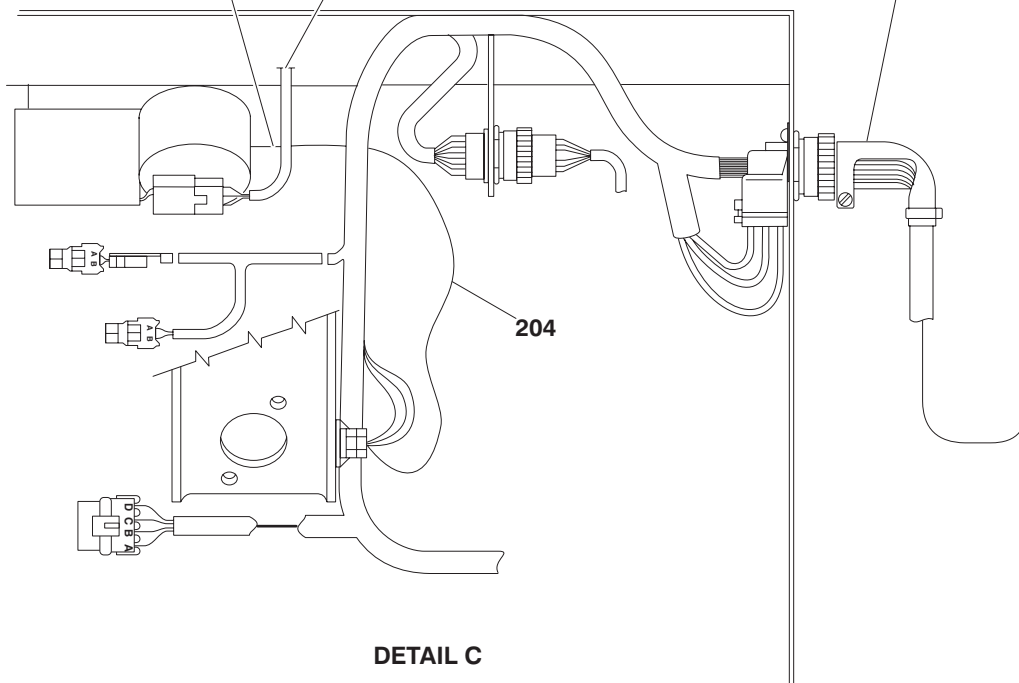


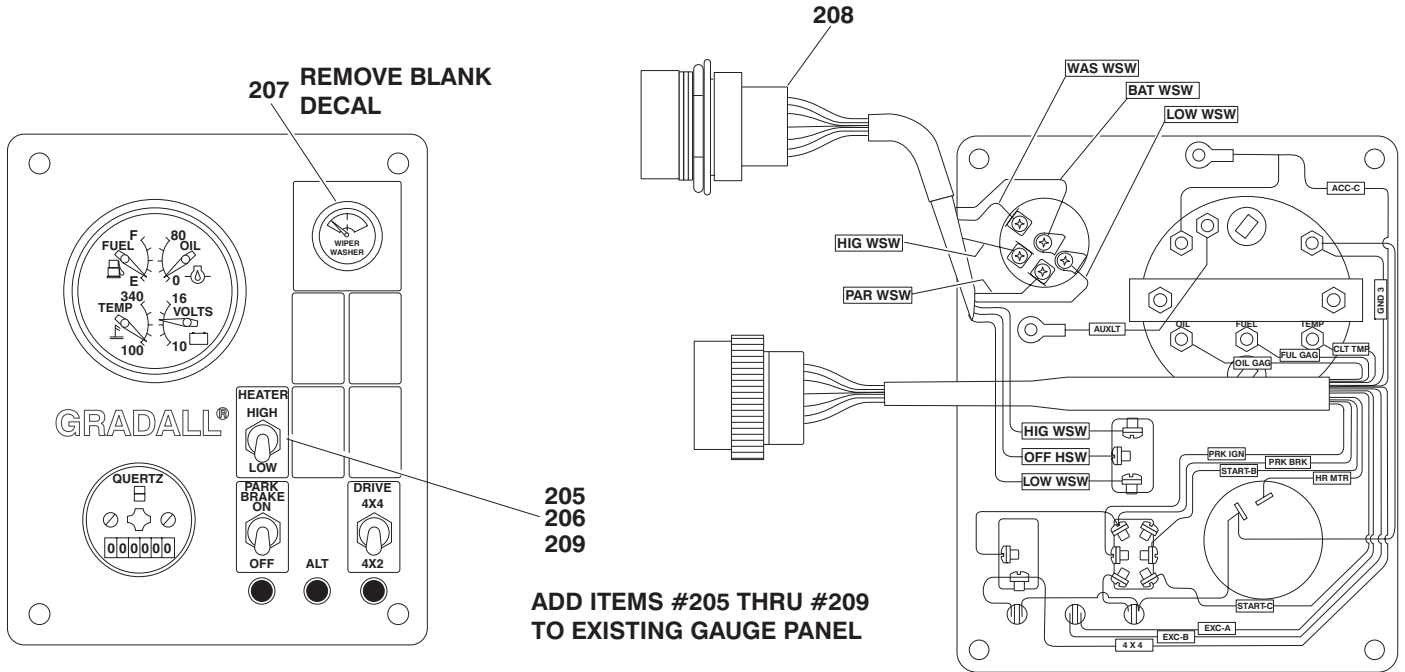
REMOVE EXISTING GROUND
TAB FROM WIPER MOTOR &
RE-USE MTG. SCREW

SEE DETAIL B

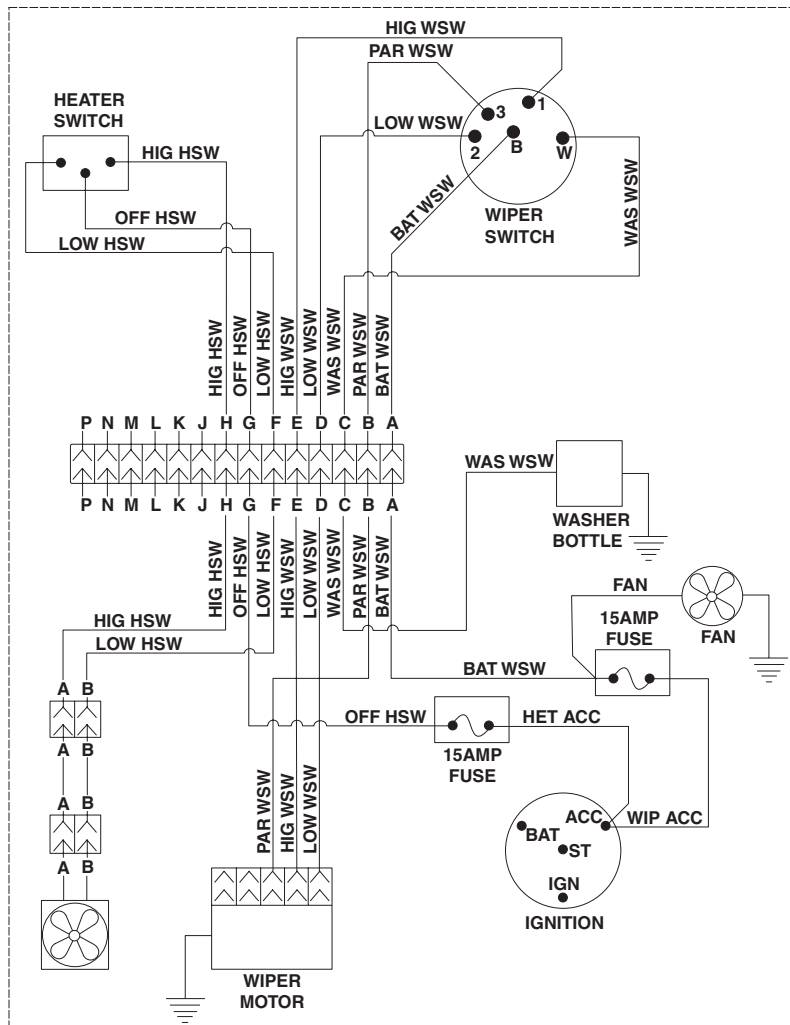
PAR WSW
HIG WSW
LOW WSW

ROTATE GUARD 180°
TO CLEAN OIL COOLER
ON MODELS 522D & 524D

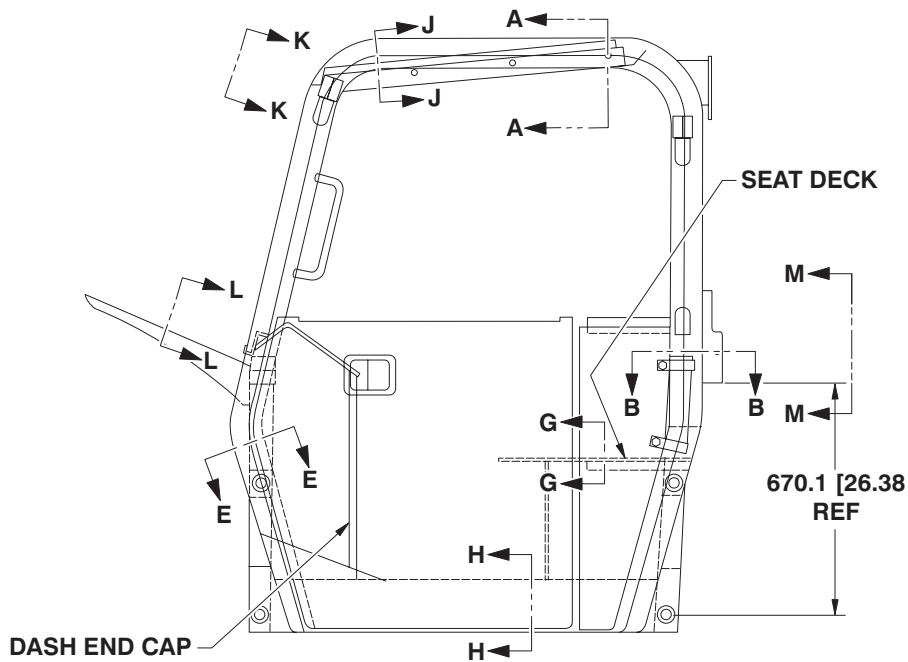
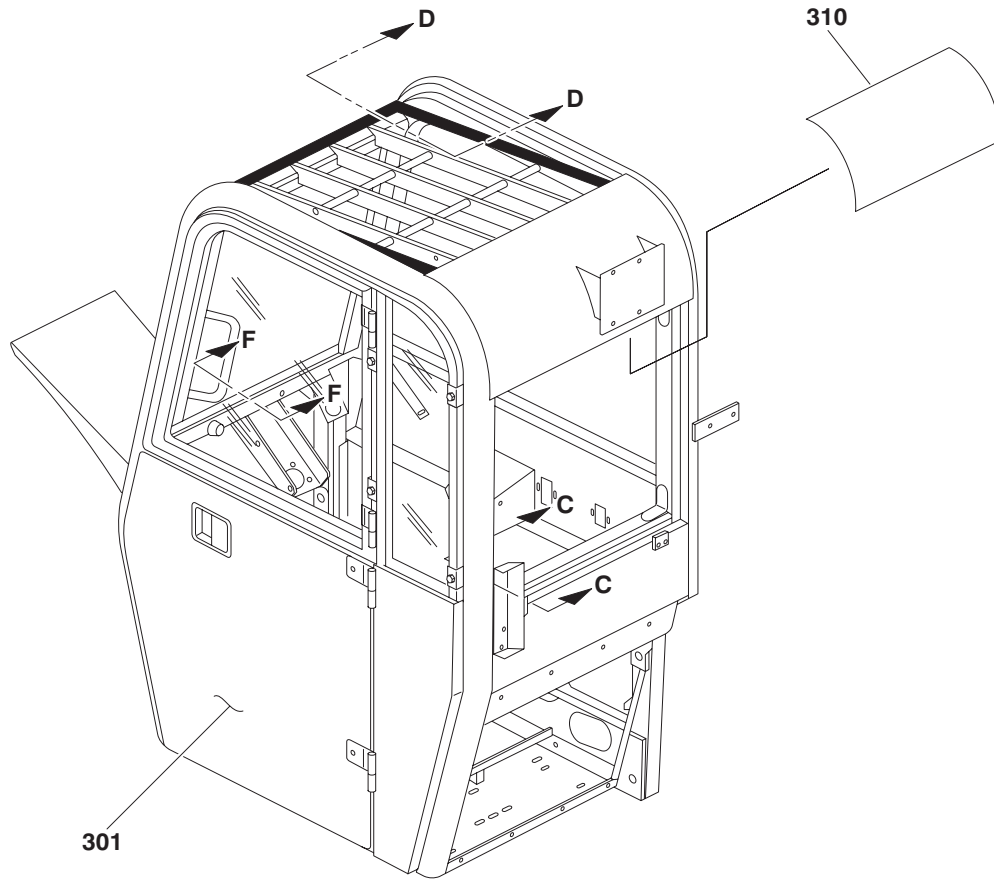


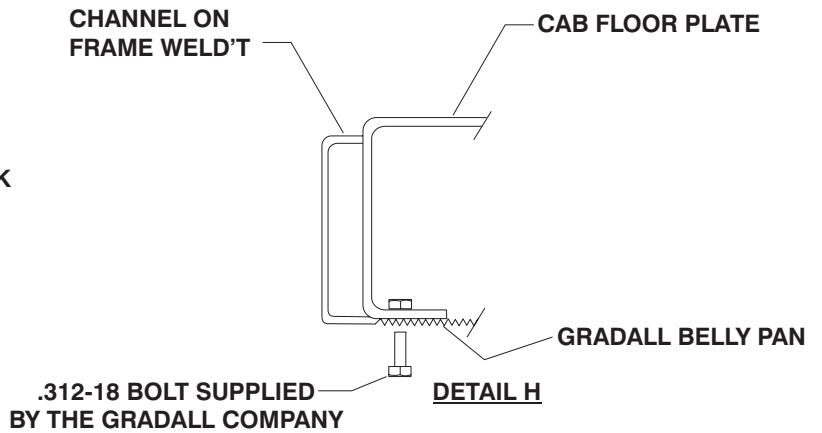
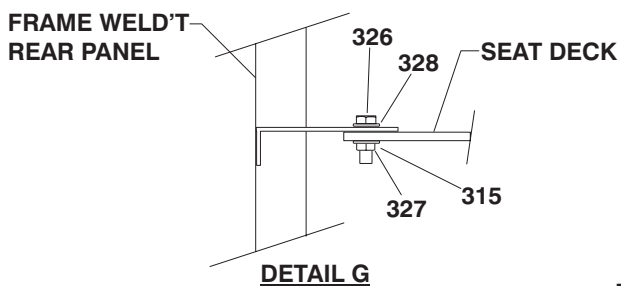
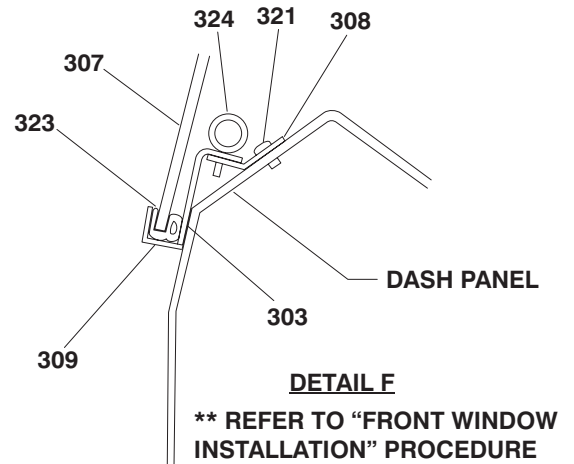
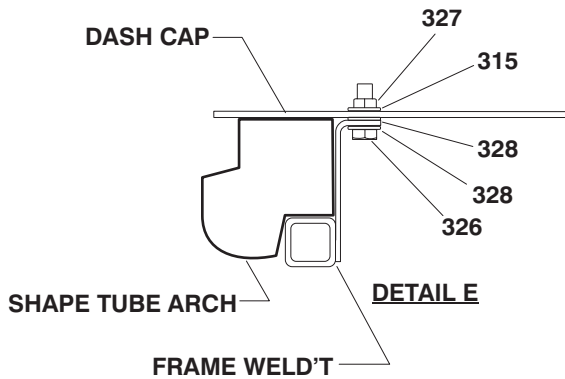
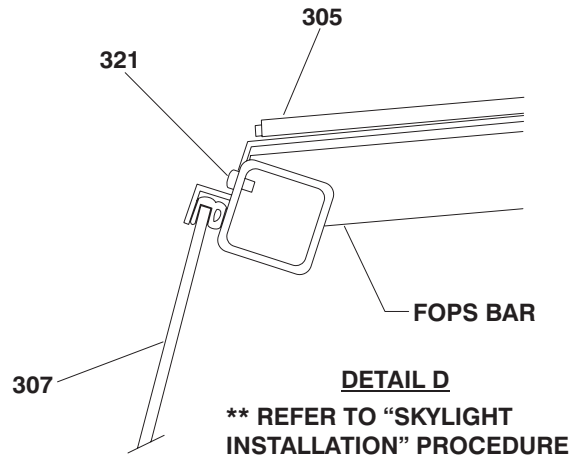
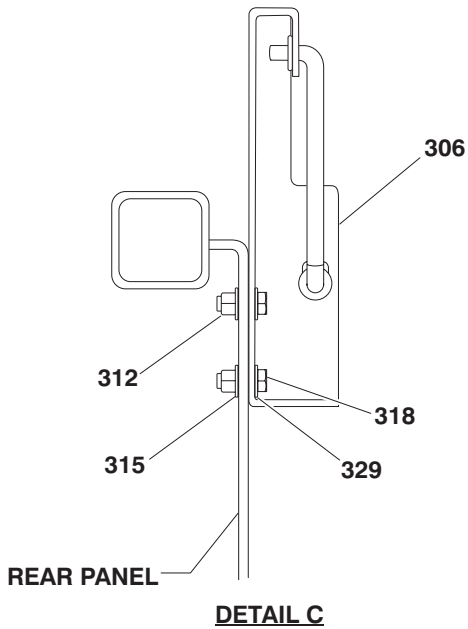
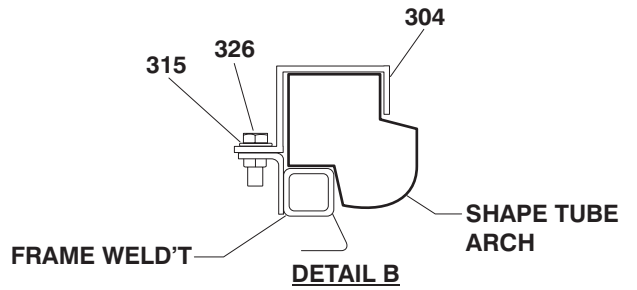
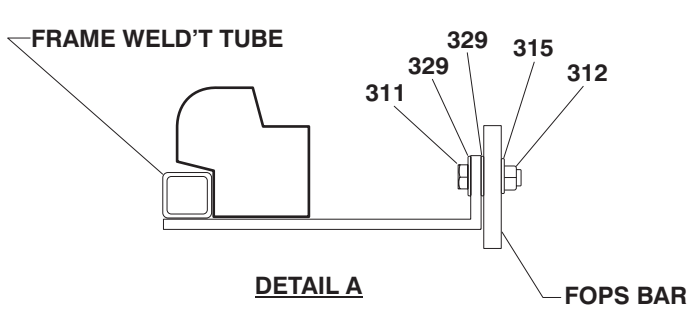


WIRING SCHEMATIC



CAB ENCLOSURE ASSEMBLY





LH SIDE FRAME INSTALLATION

1. USING THE LH SIDE FRAME (ITEM 301) AS A TEMPLATE, DRILL (3) Ø0.375" HOLES IN DASH END CAP AND (2) Ø0.375" HOLES IN SEAT DECK.
2. SCUFF SURFACES TO BE URETHANED WITH ABRASIVE PAD.
3. CLEAN SURFACES TO BE URETHANED WITH ISOPROPYL ALCOHOL.
4. APPLY URETHANE TO SIDE FRAME TUBE.
5. INSTALL THE LH SIDE FRAME INTO THE RECESS OF SHAPE TUBE ARCH.
6. INSTALL REAR LH PANEL CLAMP (ITEM #304) AS SHOWN IN DETAIL B.
7. MOUNT LH SIDE FRAME TO DASH END CAP USING DRILLED HOLES, AS SHOWN IN DETAIL C.
8. MOUNT LH SIDE FRAME TO LH FOPS BAR AS SHOWN IN DETAIL A.
9. MOUNT LH SIDE FRAME TO SEAT DECK AS SHOWN IN DETAIL G.

SKYLIGHT INSTALLATION

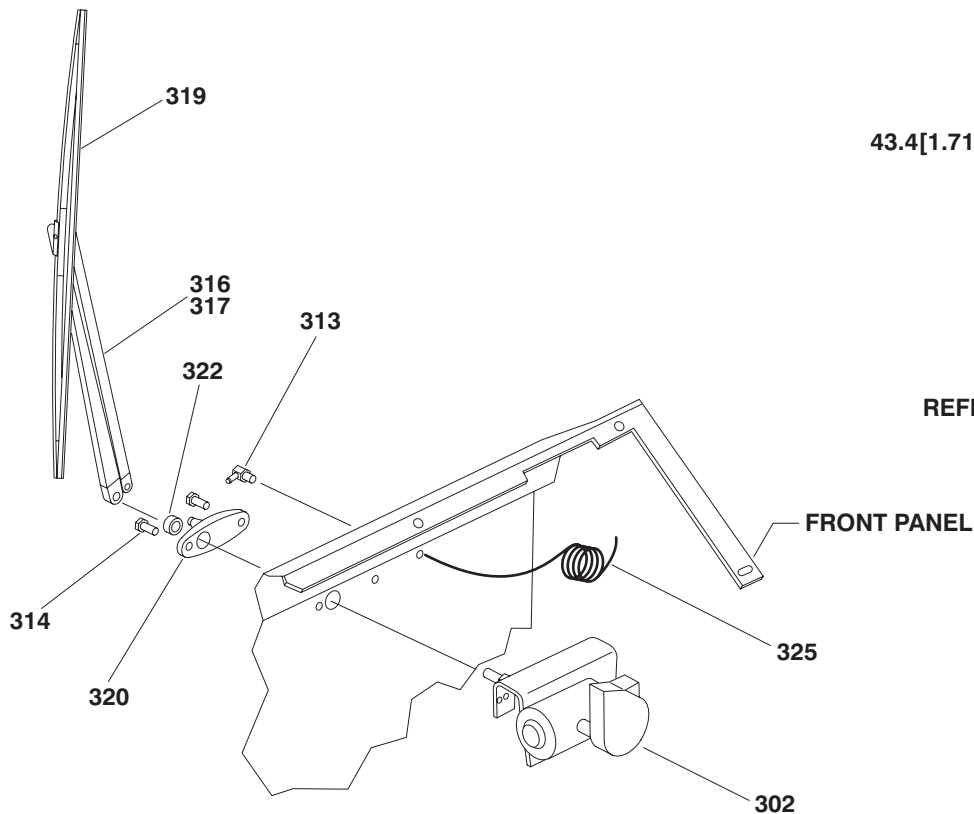
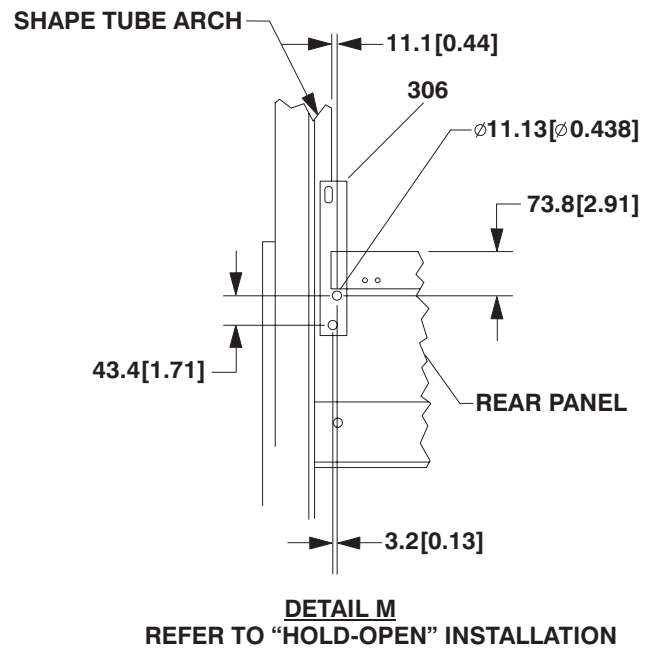
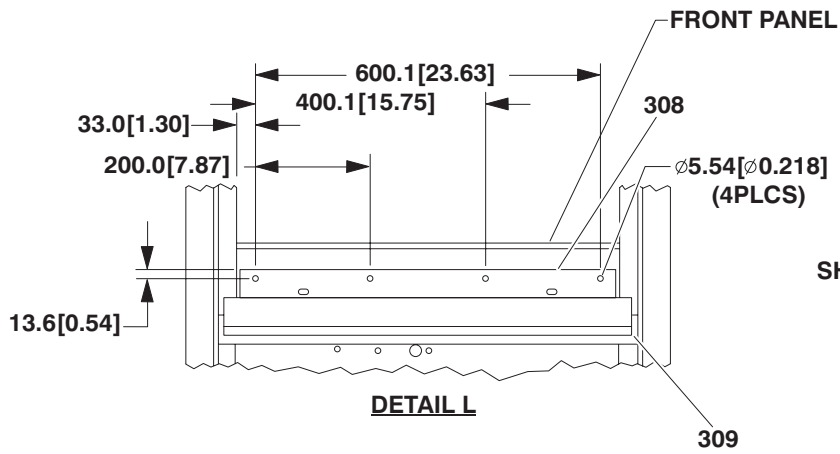
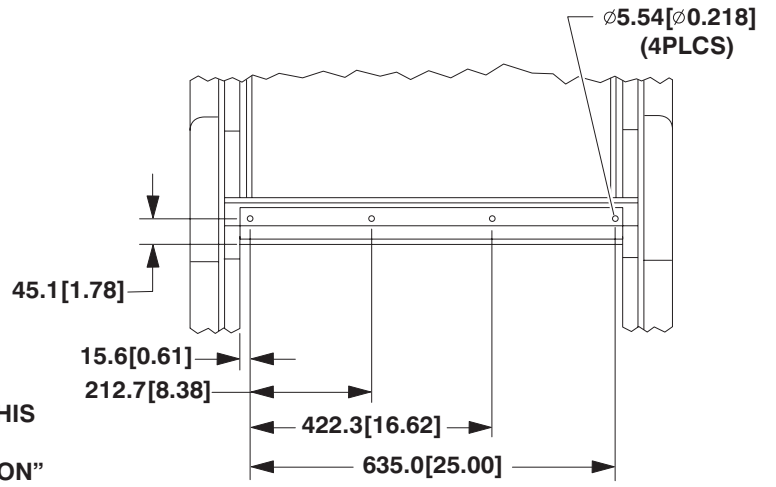
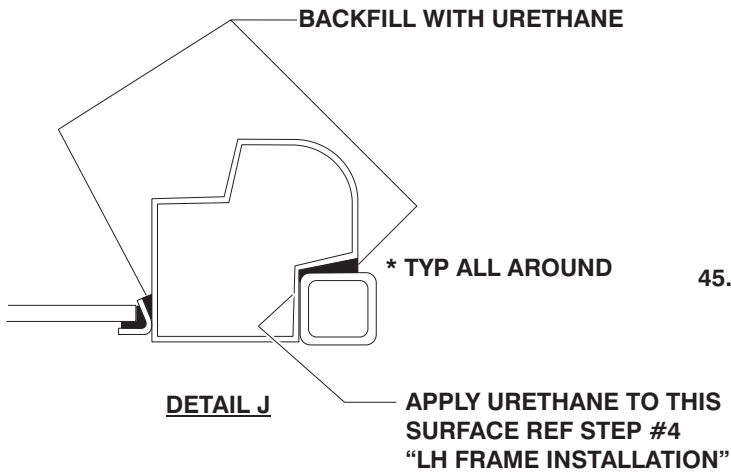
1. USING THE SKYLIGHT AS A TEMPLATE, DRILL (4) Ø0.218 HOLES IN TOP HORIZONTAL TUBE AS SHOWN IN DETAIL K. REF. DIMENSION ON DETAIL K.
2. CLEAN SURFACES TO BE URETHANED WITH ISOPROPYL ALCOHOL.
3. POSITION SKYLIGHT IN PLACE OVER FOPS BARS.
4. SECURE SKYLIGHT AS SHOWN IN DETAIL D.
5. APPLY URETHANE BACKFILL ON BOTH SIDES AND REAR OF SKYLIGHT AS SHOWN IN DETAIL J.

DOOR HOLD-OPEN INSTALLATION

1. PUNCH OUT THE KNOCKOUTS IN THE BACK WALL TO GIVE TWO Ø0.438 HOLES (REF HOLD-OPEN BRACKET AND DIMENSIONS SHOWN IN DETAIL M).
2. INSTALL HOLD-OPEN AS SHOWN IN DETAIL C.

FRONT WINDOW INSTALLATION

1. USING FRONT WINDOW BRACKET (ITEM #309) AS A TEMPLATE, DRILL (4) Ø0.218 HOLES (REF CENTER PUNCHES) AS SHOWN IN DETAIL L
2. INSTALL ITEM #308 (P/N 91334014) USING DRILL HOLES AS SHOWN IN DETAIL F.
3. INSTALL PSA FOAM ALONG BOTTOM SURFACE OF ITEM #309 (P/N 91334015) AS SHOWN IN DETAIL F.
4. PLACE TOP OF WINDOW IN UPPER CHANNEL, USE ITEM #324 (P/N 91334028) TO RETAIN WINDOW ALONG LOWER INSIDE EDGE OF WINDOW.



CAB ENCLOSURE KIT

P/N 91345003

SEQ #	ITEM NO.	DESCRIPTION	QTY
	91345003	CAB ENCLOSURE KIT	REF.
1	91143267	CAB KIT INSTALLATION (SEE ITEMS 301-330 FOR BREAKDOWN)	1
2	91083155	VALVE, TRUCK	2
3	77383540	COOLANT RESTRICTOR ORIFICE	1
* 4	88712034	FITTING, STREET ELBOW	1
■ * 5	88711383	BUSHING	1
■ * 6	24641328	VALVE, SHUT OFF	1
7	86683193	CLAMP	2
	91345003	CAB ENCLOSURE COMPONENTS	REF.
101	91125106	HEATER ASSEMBLY	1
102-103	NOT USED		
104	77143004	SCREW (WHIZ-LOCK)	4
105	77143006	NUT (WHIZ-LOCK)	4
106	90206169	HOSE, HEATER	1
107	91141459	HOSE, HEATER	1
108	86683193	CLAMP, HOSE	2
109	86683480	CONNECTOR, BUTT	1
110	77163102	SPADE, FEMALE	1
111	90200680	FAN	1
112	88211030	BOLT #10-24NC X 3/4"	4
113	77143017	NUT #10-24NC (WHIZ-LOCK)	4
114	90029955	GROMMET	3
115	91081499	ANGLE, MOUNTING	1
116	90027319	SCREW 1/4"-20NC (SELF TAPPING)	2
117	83683085	WASHER BOTTLE ASSEMBLY	1
118	91146099	BRACKET, BOTTLE MOUNTING	1
119	88201003	BOLT 1/4"-20NC X3/4"	6
120	88561009	LOCKWASHER 1/4"	6
121	88501004	NUT 1/4"-20NC	6
	91345003	CAB ENCLOSURE ELECTRICAL COMPONENTS	REF
201	77363268	FUSE 15AMP	2
202	91143335	HARNESS, WIPER-HEATER OPTION	1
203	91123182	HARNESS, HEATER	1
204	91361018	JUMPER, WIRE	1
205	77383744	SWITCH, HEATER	1
206	77383470	BOOT	1
207	80963101	SWITCH, WIPER & WASHER	1
208	91143333	HARNESS, WIPER-WASHER-HEATER	1
209	91143361	DECAL - HEATER	1
	91143267	CAB KIT INSTALLATION	REF
301	91334007	ASSEMBLY, LH SIDE	1
302	91334008	ASSEMBLY, WIPER MOTOR	1
303	91334009	FOAM	2.25'
304	91334010	BRACKET, REAR LH PANEL CLAMP	2
305	91334011	ASSEMBLY, SKYLIGHT	1

SEQ #	ITEM NO.	DESCRIPTION	QTY
306	91334012	ASSEMBLY, HOLD-OPEN BRACKET	1
307	91334013	ASSEMBLY, WINDOW, FRONT	1
308	91334014	ANGLE, FRONT WINDOW	1
309	91334015	BRACKET, FRONT WINDOW	1
310	91334016	FOAM, HEADLINER	1
311	91334017	BOLT 3/4"-16NC X 1 1/4"	2
312	91334018	LOCKNUT 3/4"-16NC	4
313	80384206	WET ARM ADAPTER	1
314	80384207	SCREW 1/4"-28 X 3/4"	2
315	91334021	WASHER, SPRING	11
316	80384210	ARM, WIPER KIT	1
317	80384211	ARM, WIPER	1
318	91334024	BOLT 3/4"-16NC X 7/8"	2
319	91484021	BLADE, WIPER	1
320	80384214	PANTOGRAPH ADAPTER KIT	1
321	80264066	SCREW M6 X 1.0 X 12	8
322	91334035	SPACER	1
323	NOT USED		
324	91334028	PIN, DETENT, RING	2
325	91484020	HOSE, WASHER	10'
326	91334030	BOLT 5/16"-18NC X 1"	7
327	91334031	NUT 5/16"-18NC	5
328	91334032	FLATWASHER 5/16"	8
329	91334033	FLATWASHER 3/4"	6
330	91334034	URETHANE, BLACK	2
400	3128472	INSTRUCTION SHEET	1