

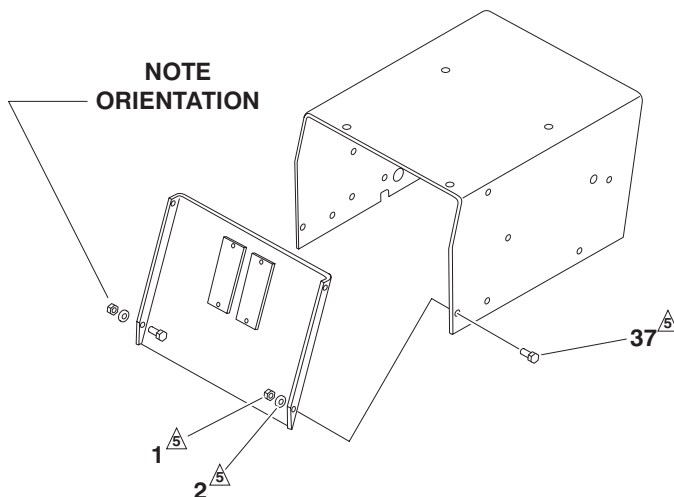
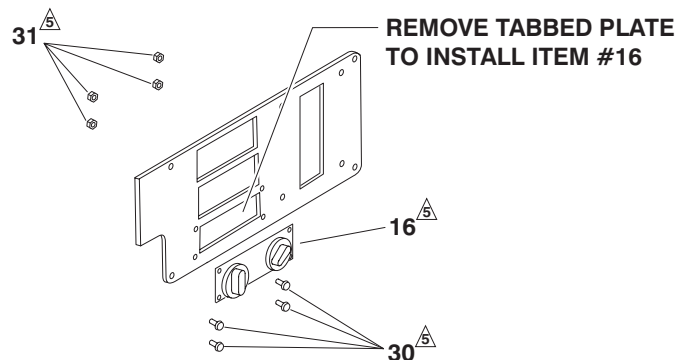
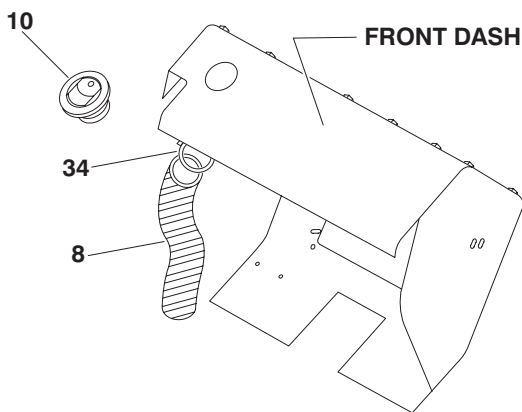
CAB ENCLOSURE

*SkyTrak 8042 Legacy, 10042 Legacy,
10054 Legacy, 6042 Legacy & 6036 Legacy*

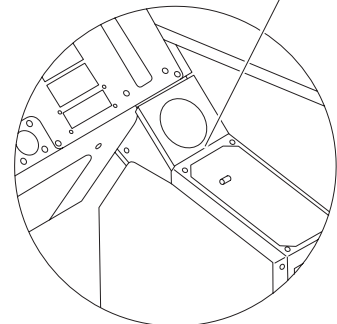
For Kit #7139050S

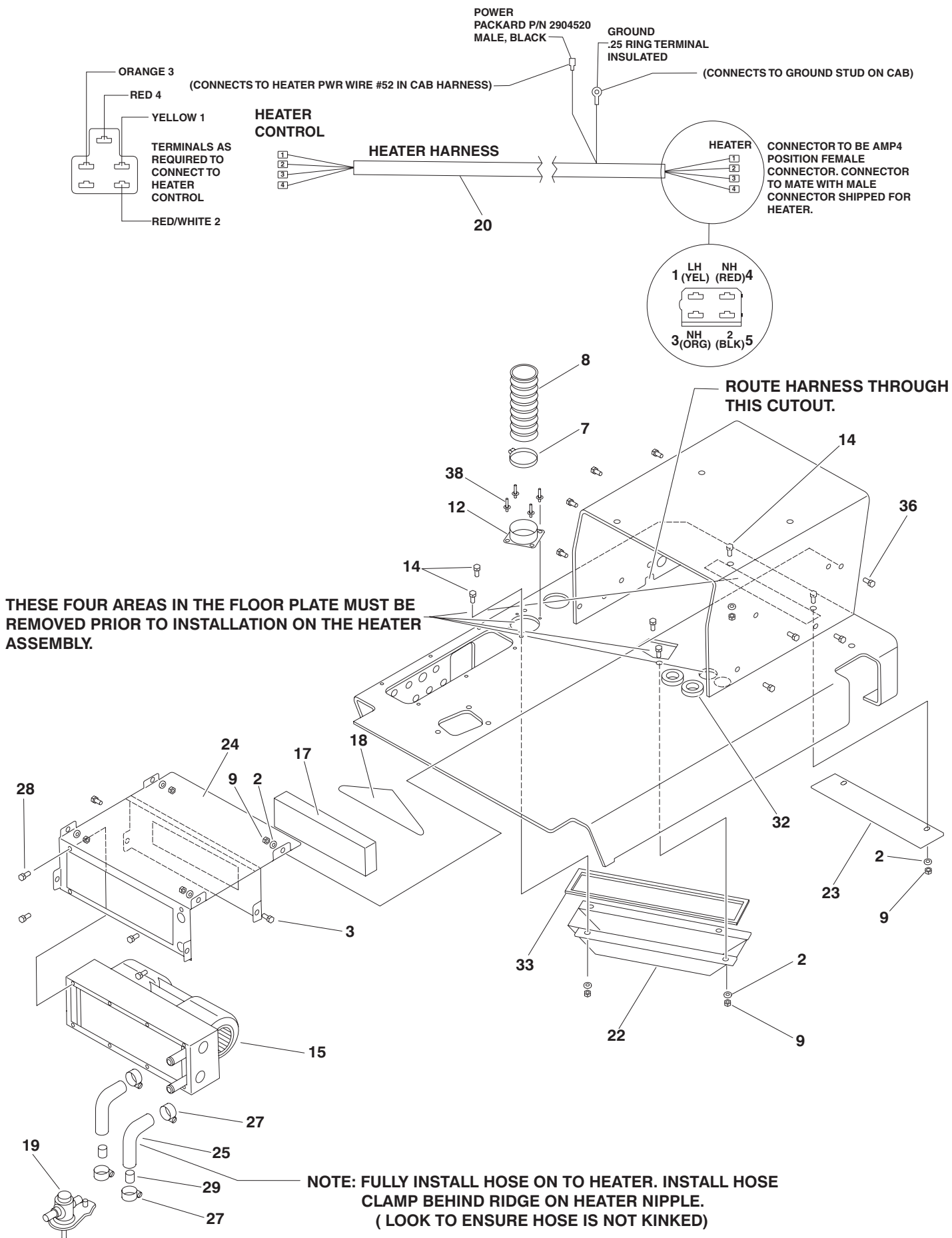
HEATER ASSEMBLY

1. ATTACH ITEM #20 TO ITEM #16. ROUTE HARNESS THROUGH DASH, OUT RH CONSOLE, AND IN THROUGH SEAT DECK. ATTACH PACKARD CONNECTOR TO HARNESS ONCE HARNESS WIRES HAVE BEEN ROUTED INTO SEAT DECK.
2. ITEM #19 WILL BE SHIPPED LOOSE.
3. ITEM #33 NEEDS TO BE ASSEMBLED TO HEATER DUCT. THEN ASSEMBLED TO CAB. DO NOT ASSEMBLE ITEM #33 TO CAB, THEN ASSEMBLE HEATER DUCT.
4. ITEM #34, NYLON TIE TO BE ASSEMBLED TO JOYSTICK PANEL & HOSE FOR SHIPMENT TO TRAK. THE NYLON TIE IS FOR SHIPPING ONLY.
5. PARTS TO BE SHIPPED LOOSE.
6. VERIFY THAT LIKE COLORS ARE MATED WHEN HEATER CONNECTORS ARE PLUGGED TOGETHER.
7. FOR SOME UNITS 4 PIN CONNECTOR ON HEATER HARNESS WILL NEED TO BE REMOVED TO ROUTE HARNESS THROUGH CAB. TO REMOVE CONNECTOR, USE A SMALL FLAT SCREWDRIVER TO PUSH DOWN RETAINING TANG ON EACH WIRE. WHILE HOLDING TANG DOWN, PULL WIRE FROM CONNECTOR. REINSTALL WIRES IN CONNECTOR PER DRAWING P/N 8036118.

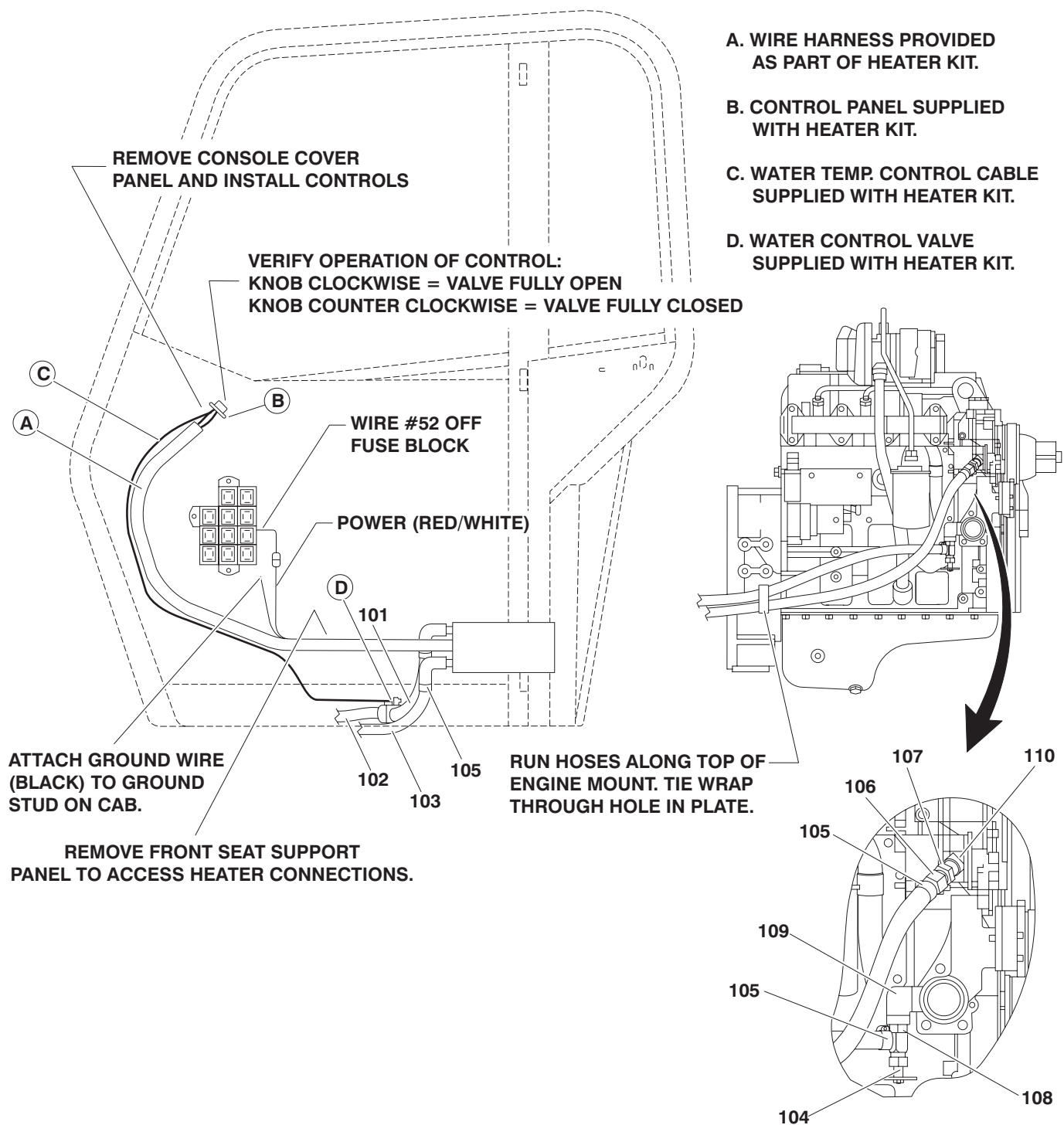


ATTACH P/N 8036110 TO RH-CONSOLE
WITH P/N 8035406 NYLON TIE, IN THIS
LOCATION.



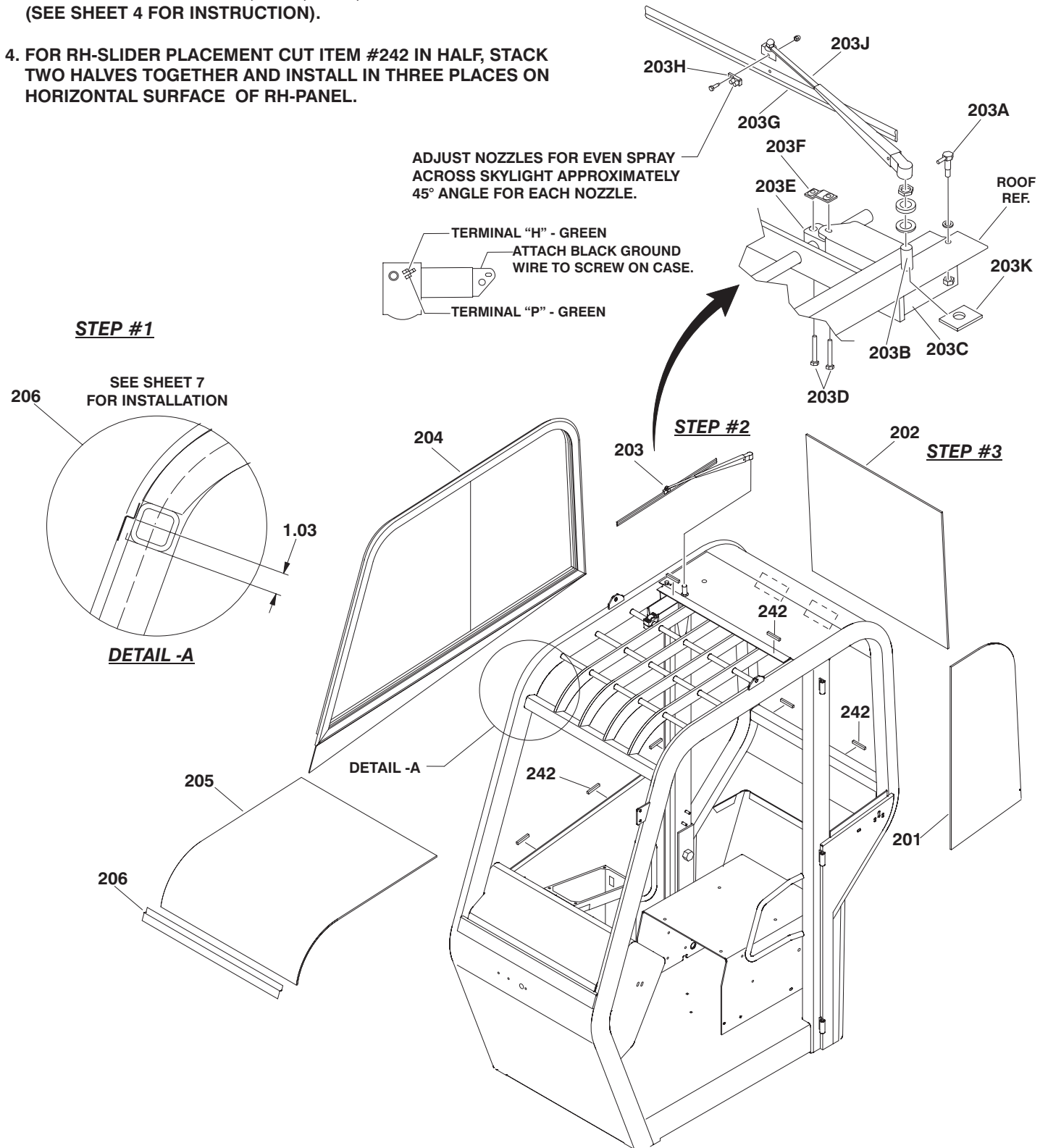


CAB HEATER HOSE INSTALLATION

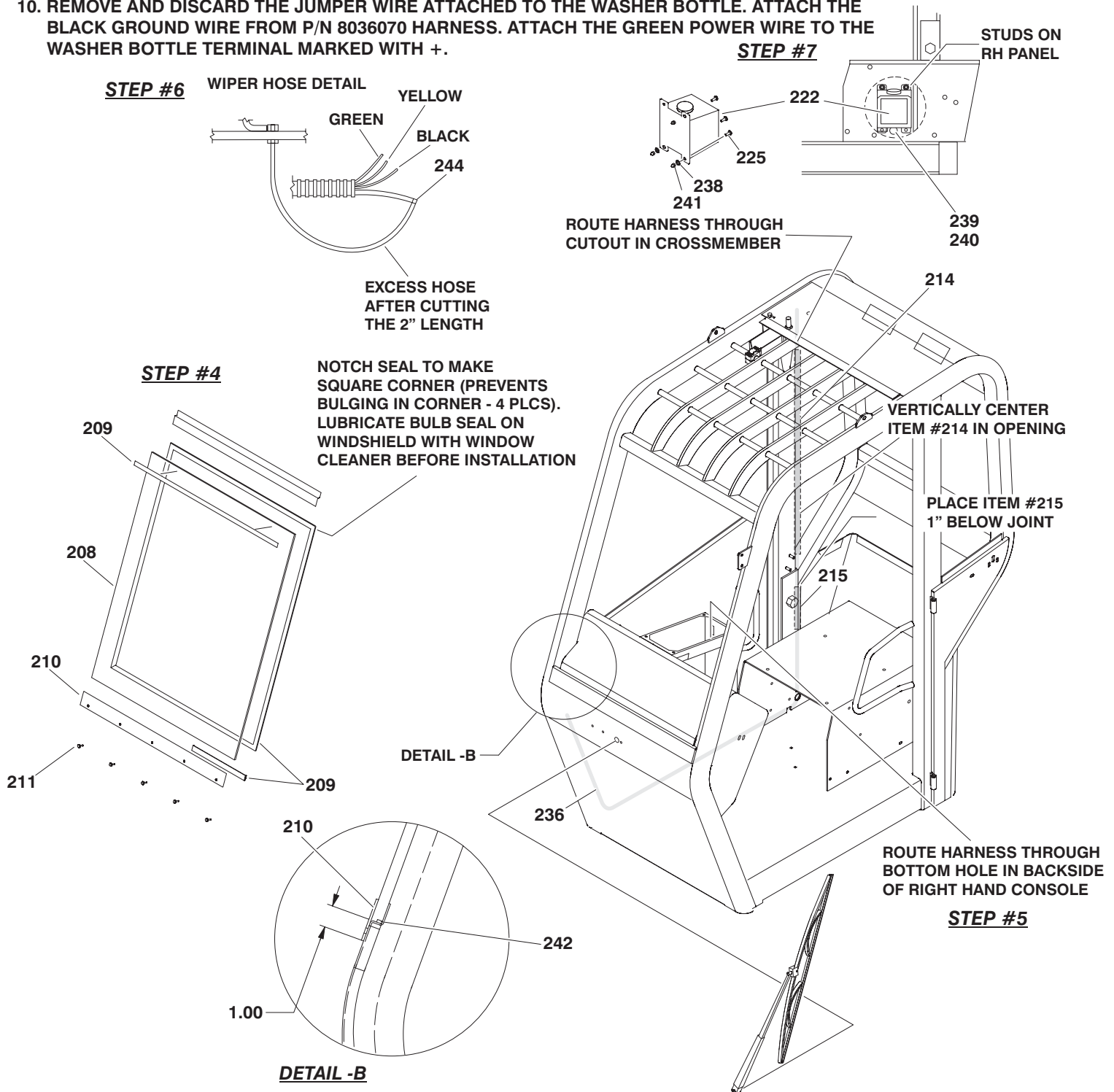


CAB ENCLOSURE INSTALLATION

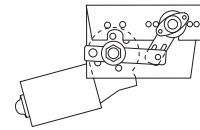
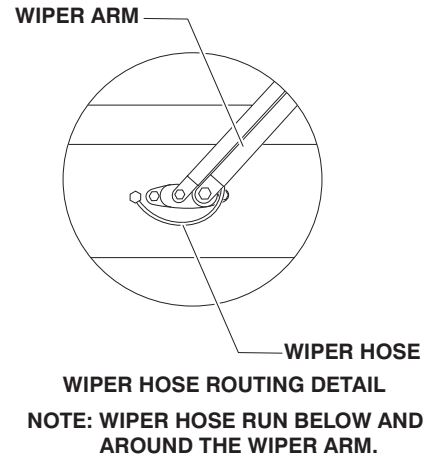
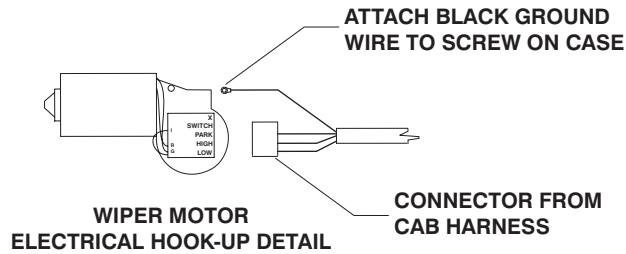
1. ITEM #206 TO BE FIRST INSTALLED IN KIT.
2. INSTALL ITEM #203 (SKYLIGHT WIPER) BEFORE ITEM #205 (SKYLIGHT GLASS).
3. URETHANE IN ITEMS #201, #202, #204, #205 & #206
(SEE SHEET 4 FOR INSTRUCTION).
4. FOR RH-SLIDER PLACEMENT CUT ITEM #242 IN HALF, STACK TWO HALVES TOGETHER AND INSTALL IN THREE PLACES ON HORIZONTAL SURFACE OF RH-PANEL.



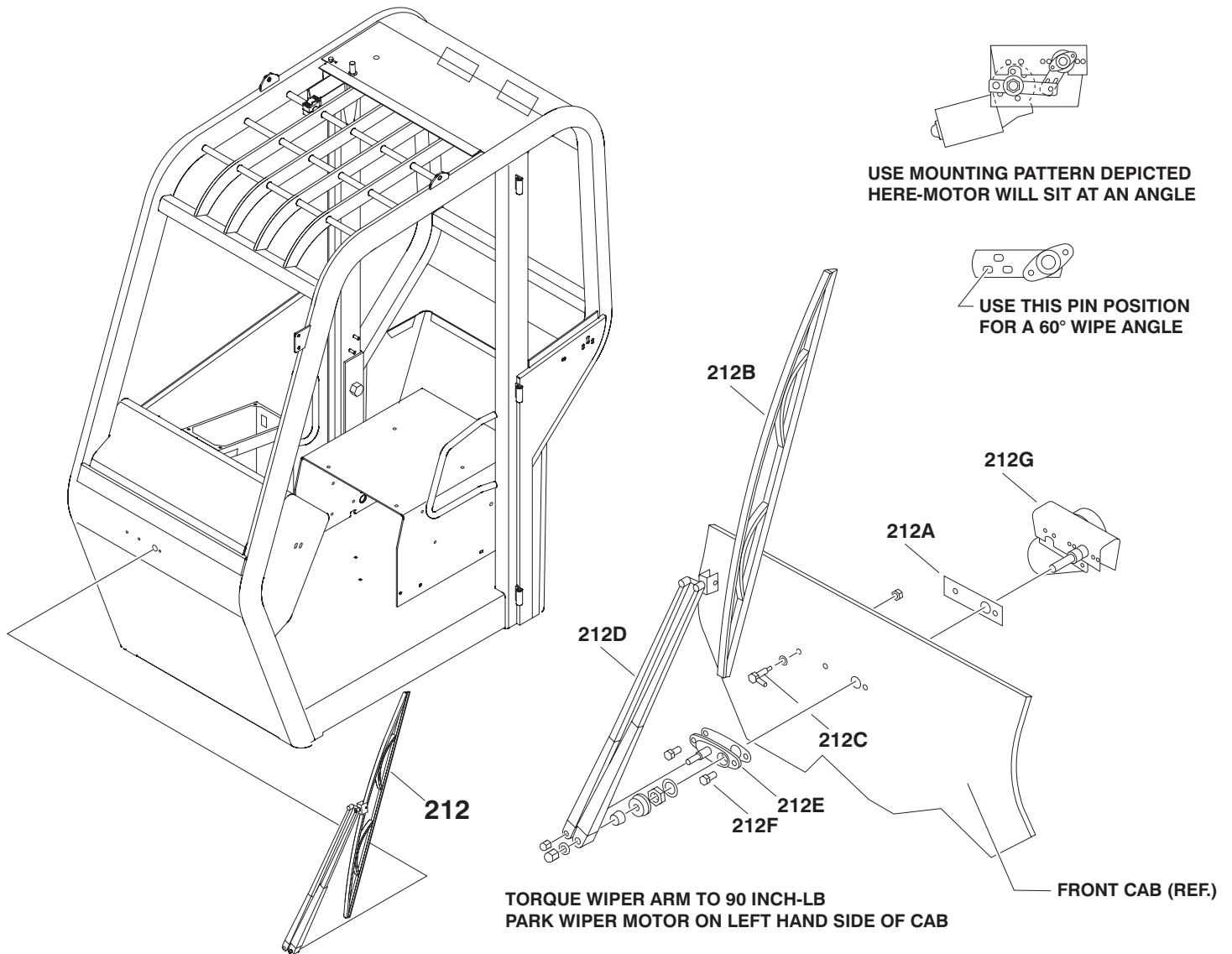
5. DO NOT SEPARATE BULBS ON ITEM #209. INSTALL AROUND INTERIOR PERIMETER OF ITEM #208. ALSO INSTALL ITEM #209 ON EXTERIOR OF ITEM #208 ALONG TOP EDGE.
6. INSTALL ITEM #209 ON ENTIRE LENGTH OF ITEM #210. INSTALL ON INTERIOR SIDE OF PART.
7. RUN ITEM #209 ALONG INTERIOR PERIMETER OF ITEM #208 TO BE INSTALLED AS ONE PIECE.
8. ALIGN P/N 80264054 - TAPE IN PLACE-PREDRILL HOLES FOR SCREWS USING BIT NO LARGER THAN 9/64".
9. ROUTE ITEM #236 (WIPER WIRE HARNESS) THROUGH FRONT DASH AND RH CONSOLE-OUT ACCESS HOLE IN REAR OF CONSOLE. ROUTE PORTION OF HARNESS TO ITEM #203 (SKYLIGHT WIPER) THROUGH ITEMS #214 AND #215 (PLASTIC DUCTS).
10. REMOVE AND DISCARD THE JUMPER WIRE ATTACHED TO THE WASHER BOTTLE. ATTACH THE BLACK GROUND WIRE FROM P/N 8036070 HARNESS. ATTACH THE GREEN POWER WIRE TO THE WASHER BOTTLE TERMINAL MARKED WITH +.



STEP #8



USE MOUNTING PATTERN DEPICTED HERE-MOTOR WILL SIT AT AN ANGLE



INSTALL GLUED IN COMPONENTS PER FOLLOWING: (SEE EXAMPLES)

CLEAN GLASS AND SURFACE OF CAB OPENING WHERE GLASS WILL BE APPLIED. WIPE DRY WITH A CLEAN CLOTH. DO NOT USE CLEANER THAT HAS AMMONIA.

TEST FIT GLASS INTO OPENING TO VERIFY PLACEMENT.

REMOVE GLASS AND APPLY URETHANE TO ROPS STRUCTURE.

INSTALL GLASS INTO CAB OPENING. BE CAREFUL TO INSURE GLASS IS SPACED EVENLY ALL AROUND AND THAT NO CONTACT EXISTS BETWEEN GLASS AND CAB METAL. PRESS GLASS EVENLY TO INSURE PROPER BONDAGE.

TAPE LH SIDE WINDOW INTO PLACE. RH SLIDING WINDOW MUST BE CLAMPED IN PLACE-BE CAREFUL NOT TO SQUEEZE TOO TIGHTLY. 1/8" OPTIMAL DISTANCE BETWEEN WINDOWS AND STEEL.

ALLOW URETHANE TO DRY 24 HOURS AT 70°F BEFORE REMOVING TAPE AND CLAMPS. URETHANE WILL TAKE LONGER TO CURE AT LOWER TEMPERATURES AND LOW HUMIDITY.

TO TOUCH UP FRESH URETHANE, SOAPY WATER APPLIED WITH A FINGER CAN BE USED TO SMOOTH A SEAM AFTER INSTALLATION OF COMPONENTS.

TO EASILY PLACE P/N 8036052 USE THE FOLLOWING PROCESS AFTER WINDOW OPENING AND RETAINING STRIP HAVE BEEN CLEANED:

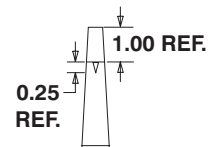
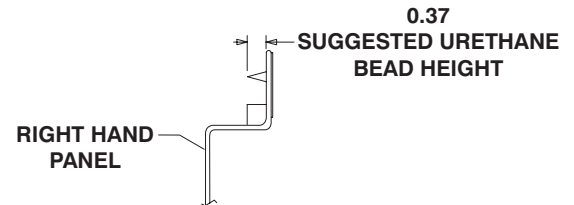
APPLY BULB SEAL (P/N 8036052) TO FRONT WINDSHIELD ON INTERIOR PERIMETER - LEAVE BULB SEAL OFF EXTERIOR FOR NOW. LOCATE SETTING BLOCKS (P/N 80264031) AS NOTED ON SHEET 1. PLACE FRONT WINDOW INTO OPENING ALLOWING GLASS TO REST ON SETTING BLOCKS.

PLACE P/N 8036052 ON CROSSMEMBER ABOVE WINDSHIELD TO LOCATE PLACEMENT. REMOVE P/N 8036052. APPLY URETHANE TO CROSSMEMBER. CLAMP P/N 8036052 IN PLACE. ALLOW URETHANE TO SET 24 HOURS BEFORE REMOVING CLAMPS.

ONCE CLAMPS ARE REMOVED FROM P/N 8036052, REMOVE FRONT GLASS AND APPLY THE REMAINING P/N 91484029 AND INSTALL WINDOW READ DIRECTIONS.

BE CAREFUL NOT TO APPLY TOO MUCH URETHANE UNDER P/N 8036052 AS OOZE OUT MAY PERMANENTLY ADHERE WINDSHIELD TO CAB.

NOTE: IT IS ALSO ACCEPTABLE TO APPLY THE REMAINING P/N 91484029 TO THE FRONT GLASS BEFORE INSTALLING THE WINDOW AND P/N 8036052. APPLY THE REMAINING P/N 91484029 TO THE EXTERIOR AFTER APPLYING P/N 91484029 TO THE INTERIOR PERIMETER AND CONTINUE AS DIRECTED ABOVE.



MODIFY TIP THAT COMES WITH MSD487 PER FOLLOWING TO AID IN APPLICATION OF URETHANE. REMOVE APPROXIMATELY 1". CUT NOTCH APPROXIMATELY 1/4" LONG IN PLASTIC ON ONE SIDE OF TIP ONLY.

CAB ENCLOSURE KIT

P/N 7139050S

SEQ #	ITEM NO.	DESCRIPTION	QTY	SEQ #	ITEM NO.	DESCRIPTION	QTY
	7139049	HEATER ASSEMBLY	REF.	203F	8036103	MOUNT, WIPER	1
1	80264049	NUT ACORN 1/4"-20NC	4	203G	8035498	BLADE, WIPER	1
2	8035416	LOCKWASHER	16	203H	8035490	KIT, WET FOR ARM	1
3	8036082	RIVNUT	2	203J	8035500	ARM, WIPER	1
4 - 6	NOT USED			203K	70020625	BLOCK, WIPER MOTOR	1
7	8035406	TIE, NYLON	2	204	8036050	RH SLIDER WINDOW	1
8	8036110	HOSE, FLEX	6 ft	205	8036051	GLASS, SKYLIGHT	1
9	91344020	NUT 1/4"-20NC	12	206	8036052	CLIP, UPPER WINDSHIELD	1
10	8035402	LOUVER, 4" ROUND	1	207	NOT USED		
11	NOT USED			208	8036054	GLASS, WINDSHIELD	1
12	8035431	ADAPTER	1	209	91484029	BULB SEAL, "DOUBLE D"	16.8ft
13	NOT USED			210	8036055	PLATE, LOWER WINDSHIELD	1
14	8036112	BOLT 1/4"-20NC X 1"	6	211	80384221	SCREW #10-16 X .75	5
15	8036113	HEATER, 12V	1	212	8036056	ASSEMBLY, FRONT WIPER	1
16	8036114	PANEL/CABLE, HEATER CONTROL	1	212A	8036100	SPACER, FRONT WIPER	1
17	8036115	FILTER, AIR	1	212B	80384213	BLADE, WIPER	1
18	8036116	O-RING	1	212C	80384206	ADAPTER, WET ARM	1
19	8036117	VALVE, HEATER WATER	1	212D	8035393	ARM, WIPER	1
20	8036118	HARNESS, HEATER WIRE	1	212E	8034815	MOUNT, PANTO PIVOT	1
21	NOT USED			212F	80384207	SCREW 1/4"-28 X 3/4"	2
22	8036120	DUCT, HEATER	1	212G	70020626	WIPER MOTOR ASSEMBLY	1
23	8036121	PLATE, FILTER ACCESS	1	213	80364009	URETHANE, SIKI	2
24	8036122	MOUNT, HEATER	1	214	8036057	DUCT, UPPER WIRE	1
25	8036123	ELBOW 90°	2	215	8036058	DUCT, LOWER WIRE	1
26	NOT USED			216	8036059	PLATE, STRIKER NUT	1
27	8036125	CLAMP, HOSE	4	217	8036060	BRACKET, STRIKER	1
28	8036126	SCREW #8-32 X 1/2"	4	218	8035437	SCREW 1/4"-20NC X 3/4"	2
29	8036127	SPLICE, COPPER	2	219	70020627	FLATWASHER	1
30	8036128	SCREW #6-32 X 1/2"	4	220	8035639	LOCKNUT .438-14	1
31	8036129	NUT NYLOCK #6-32	4	221	80264060	BOLT .438-14 X 1.5	1
32	8036130	GROMMET	2	222	8033065	RESERVOIR, WASHER	1
33	8035599	FOAM	3.25 ft	223	80264049	NUT, ACORN 1/4"-20NC	2
34	70020651	CLAMP, HOSE	1	224	NOT USED		
35	70020631	LOUVER PANEL, HEATER	1	225	8035416	FLATWASHER	4
36	80264053	SCREW 1/4"-20NC X 3/4"	8	226	8036062	ASSEMBLY, LOWER DOOR	1
37	91344043	BOLT 1/4"-20NC X 5/8"	4	227	8036063	ASSEMBLY, UPPER DOOR	1
38	91404298	RIVET, POP	4	228	80364005	BOLT 3/8"-16NC X 4.5"	2
	7301866	HEATER HOSE INSTALLATION	REF.	229	91334018	LOCKNUT 3/8"-16NC	3
101	6620472	HOSE	1	230	8036064	BOLT 3/8"-16NC X 6.5"	1
102	7139174	HOSE	1	231	80364004	CAP, HEX	6
103	7139174	HOSE	1	232	91404300	BUMPER, 2" RUBBER CONE	1
104	8360005	VALVE, SHUT OFF	1	233	8036067	LOCKWASHER	1
105	8405007	CLAMP, GEAR	6	234	8036068	NUT 5/16"-18NC	1
106	8430048	FITTING, REDUCER	1	235	80364044	RETAINER, FEMALE DOOR	1
107	8540016	FITTING, ADAPTER	1	236	8036070	HARNESS, WIPER	1
108	8540023	FITTING, REDUCER	1	237	91344017	SCREW 1/4"-20NC X 1 1/4"	2
109	8540218	FITTING 90°	1	238	70020628	FLATWASHER	4
110	8540231	FITTING 45°	1	239	91484020	HOSE, WASHER	0.33ft
	7139050	CAB ENCLOSURE KIT	REF.	240	8036072	CONNECTOR, TEE	1
201	8036073	GLASS, LH REAR	1	241	91344020	NUT 1/4"-20NC	2
202	7028737	GLASS, REAR WINDOW	1	242	80264031	BLOCK, SETTING	15
203	8036049	ASSEMBLY, SKYLIGHT WIPER	1	243	70020629	PAINT & CAULK (REF. ONLY)	1
203A	80384206	ADAPTER, WET ARM	1	244	70020630	ELBOW, NYLON BARBED	1
203B	70020652	MOTOR, WIPER	1	245	91404298	RIVET, POP	3
203C	8035493	COVER	1	246	91404299	DECAL - EMERGENCY EXIT/ONLY	1
203D	80264054	SCREW #10-24NC X 1.5	2	247	91404301	EME EXIT HAMMER W/CABLE	1
203E	8035496	BLOCK, PLASTIC CLAMP	1	248	3128466	INSTRUCTION SHEET	1