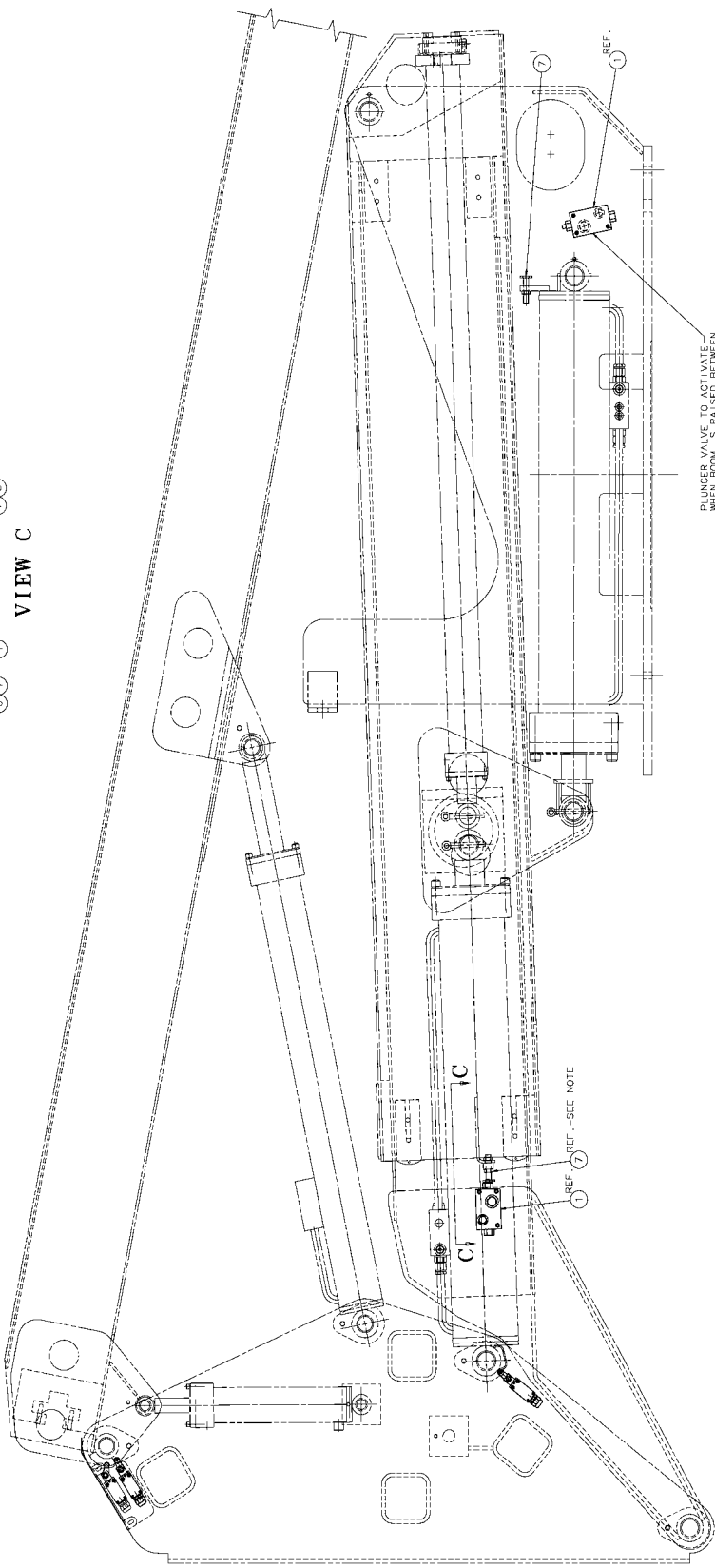


VIEW C



NOTE: ADJUST SCREWS (ITEM #7) SO THAT PLUNGER ON VALVES (ITEM #1) HAS 1/4" TRAVEL REMAINING WHEN OPERATOR IS FULLY RAISED & RETRACTED.

PLUNGER VALVE TO ACTIVATE LOWER BOOM IS RAISED BETWEEN 78° - 79°

REF. #7
REF. #1
-SEE NOTE