



1200/1350SJP Boom Length Cable Reel Replacement

Instructions

An Oshkosh Corporation Company

For Reference: 4360543

The purpose of this instruction is to replace the boom length cable reel on 1200/1350SJP ULTRA Boom lift models.

It is recommended that you read and thoroughly understand these instructions before starting this procedure.

NOTICE

Use all applicable Safety precautions while working on, around or under any machinery.

Models Affected:

- 1200SJP
- 1350SJP

Note: For machines with ship dates prior to February 11, 2003 purchase a new cable reel mounting bracket P/N: 3574431.

For machines with ship dates on or after February 11, 2003 reuse existing cable reel mounting bracket.

Options/Accessories Prohibited When Installing This Kit:

- None

Tools & Equipment Required:

- Standard mechanics tools
- Loctite #242 (JLG P/N:0100011) or equivalent

Personnel Required:

- Qualified JLG equipment mechanic



Procedure:

NOTICE

Disconnect battery power to the machine



WARNING

If the machine does not operate properly, turn off the machine immediately. Report the problem to the JLG Customer Support Department.

1. Remove the end cover (1) from the rear of the boom.
2. Disconnect the power supply plug (2) from the boom length cable reel.
3. Remove the two bolts (3) which attach the length cable reel mounting bracket to the boom and lower the cable reel assembly and mounting bracket to gain access to the cable reel lock screw hole (4) on the back side of the cable reel housing. Remove screw from new reel and install in old reel. Tighten screw finger tight to prevent the cable reel from turning.
4. Remove the bolt (5) in the cable retainer bracket to allow the cable end to be removed. Turn the cable 90° and remove it from the bracket.
5. Hold cable and remove the cable reel lock screw installed earlier and let cable retract onto drum. Install screw back into new reel and tighten allowing approximately 10" of cable to extend from reel.
6. Remove the four bolts (6) securing the existing mounting bracket to the length cable reel. On machines with ship dates prior to February 11, 2003 replace mounting bracket with new bracket P/N: 3574431. On machines with ship dates on or after February 11, 2003 reuse existing mounting bracket. Install bracket in place using the original hardware (6). Install the cable back into the cable retainer bracket and install the retainer bolt (5) to secure the cable. Loosen cable reel lock screw (4) to allow free movement of cable.
7. Install the length cable reel assembly to the top of the boom using the original hardware (3). Use loctite #242 on bolts and securely tighten.
8. Connect the power supply cable (2) to the length cable reel assembly and reconnect battery power to the machine.
9. Perform the daily "Boom Control System Check" as stated in the JLG Operation and Safety. If the machine does not pass the Boom Control System Check contact the JLG Customer Service Team at 877-JLG-LIFT (554-5438).
10. Once the installation has been completed and the machine is operational, install the end cover (1) on the rear of the boom

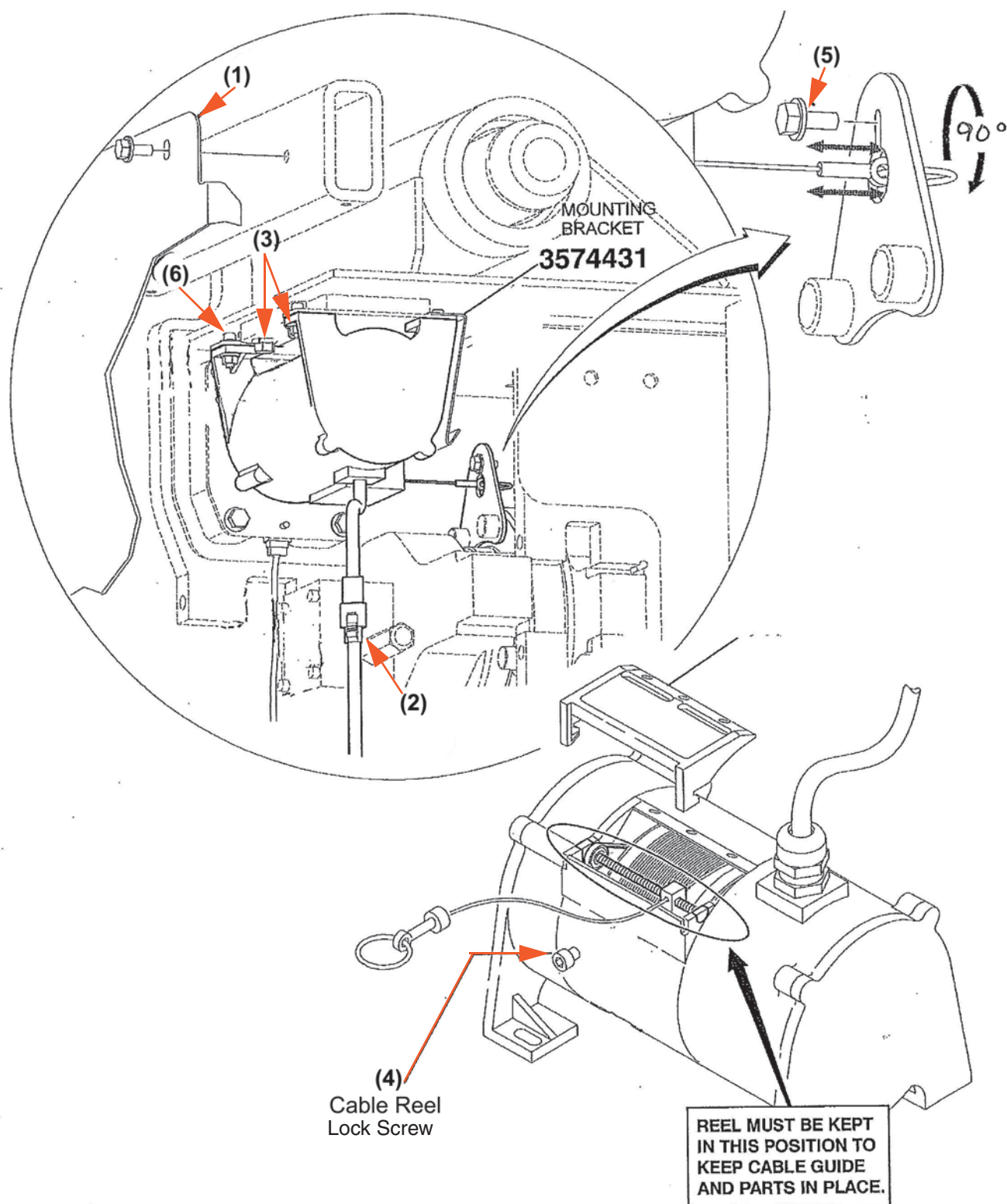


Figure 1