



As Of 3/4/2024

With this bulletin, we would like to inform you that, because of a design change from the supplier, the new Remote Boxes (part number 28095300, ODU Remote Controller, New Display) will now be equipped with a new style Emergency Stop Button.



This update is merely aesthetic in change, and will be interchangeable with the previous part number. See instructions below:



Previous Style Button



New Style Button

- Remove the silicone around the old button by cutter and then remove the old button.



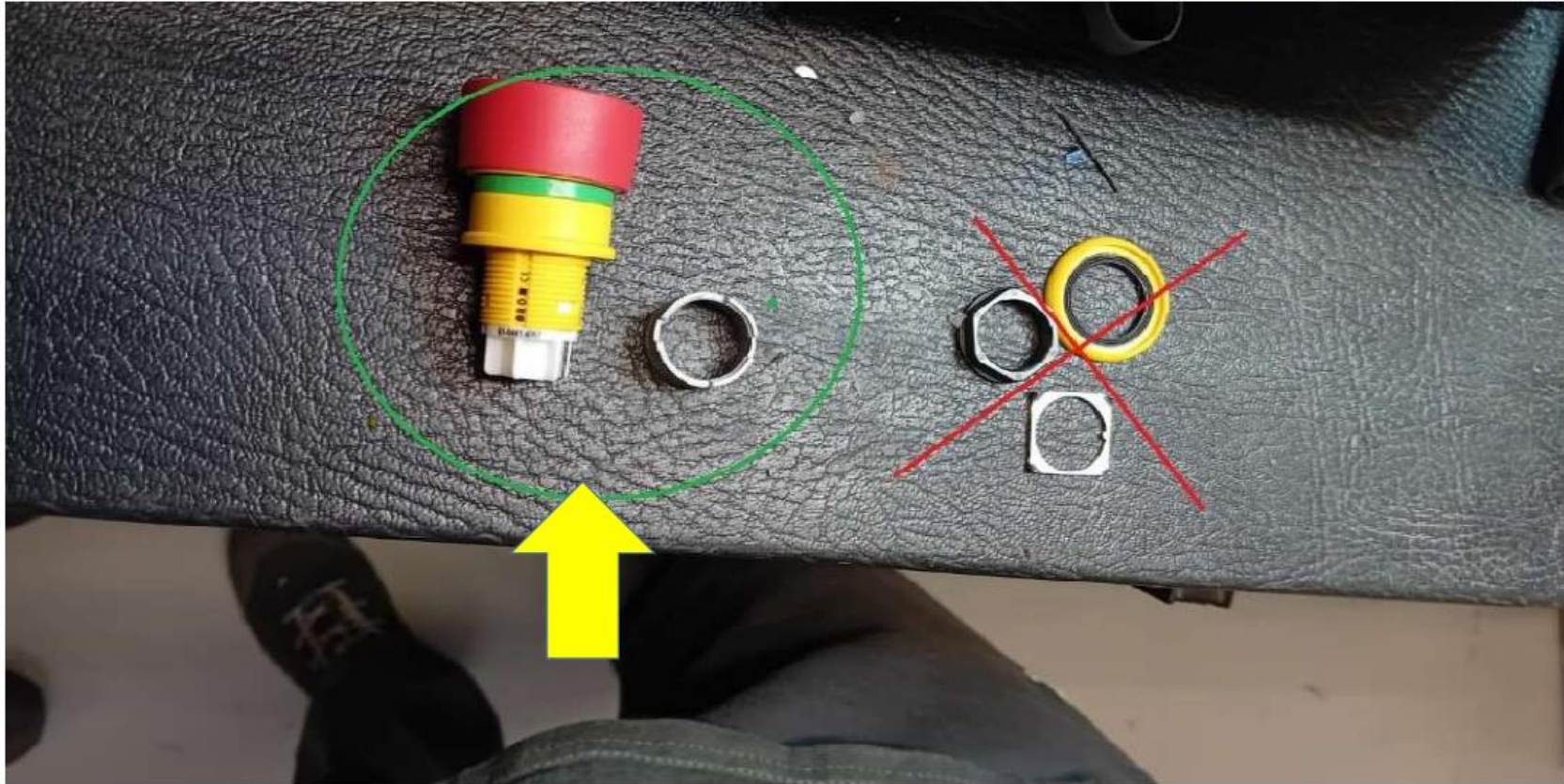
- Remove the tooth as shown in the image below by cutter.



- **Clean the front side of the remote control due to eliminate silicone residues.**



New Required Items



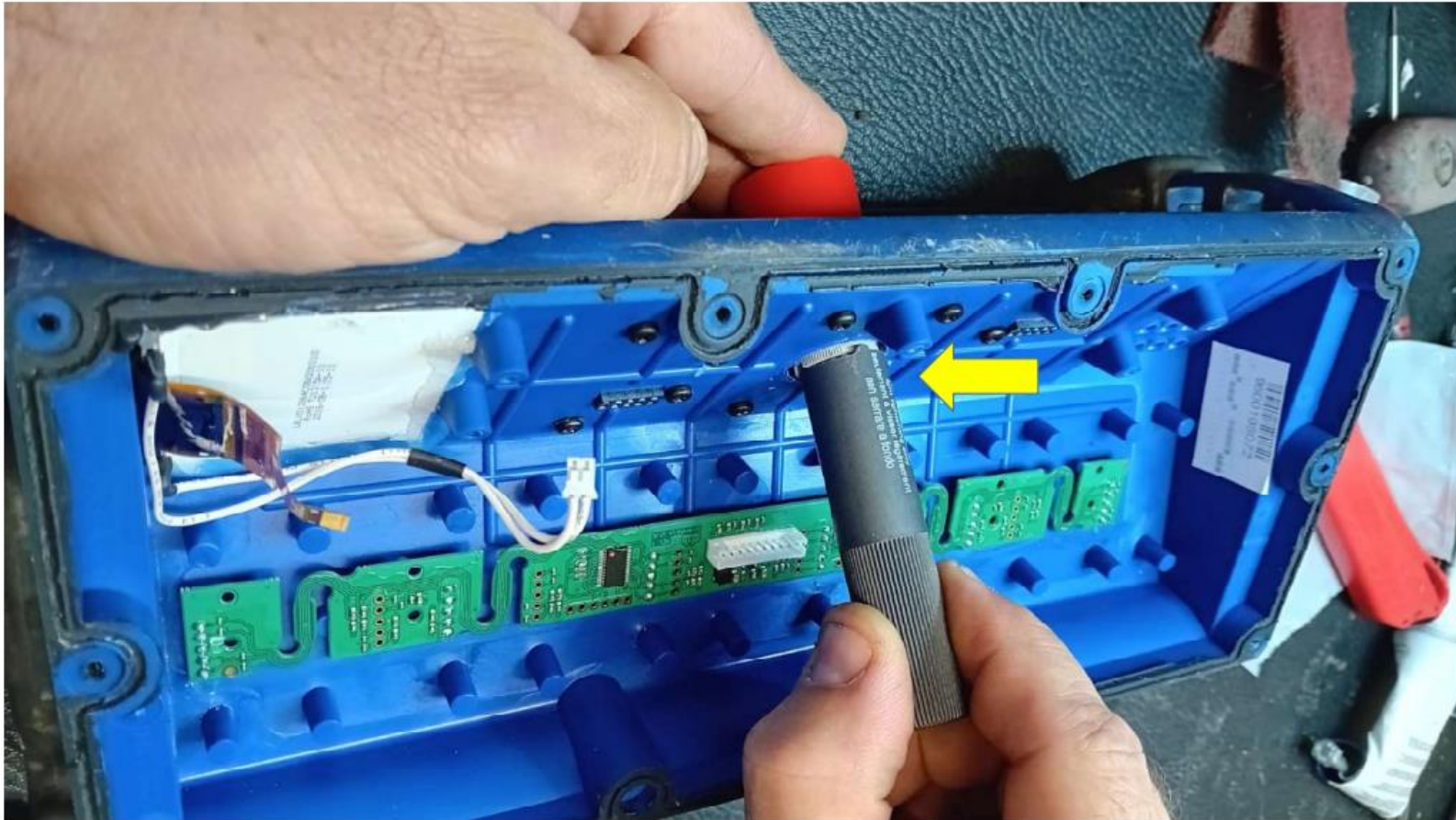
- **Apply new sealant around the new button on surface of the button as showed below.**



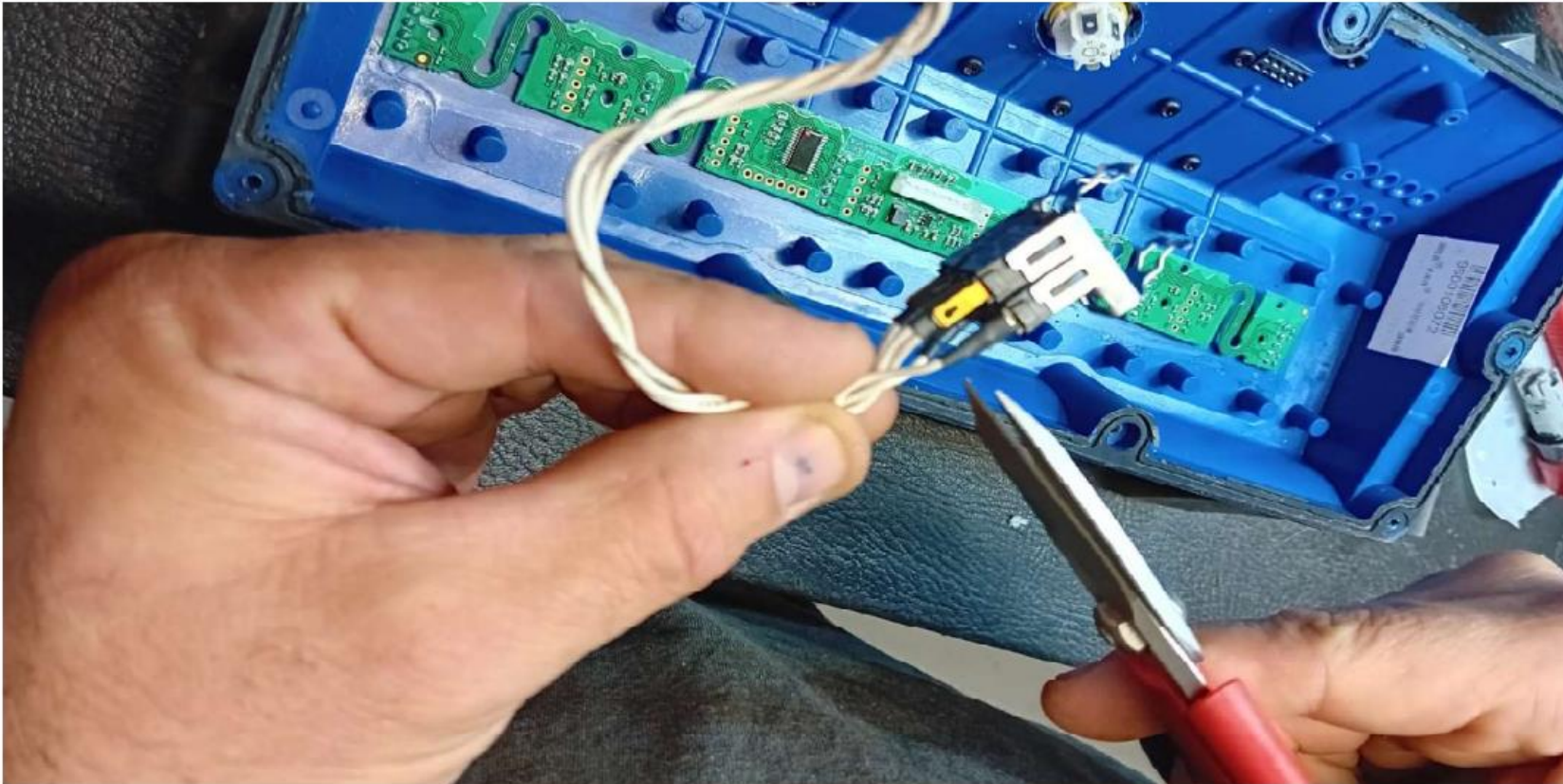
- Install the new emergency button into the housing.
- Apply the ring on the back of the emergency button.



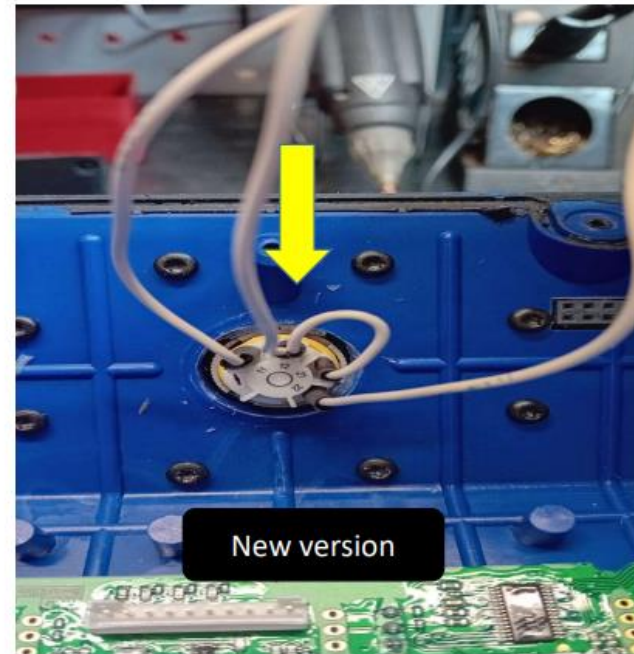
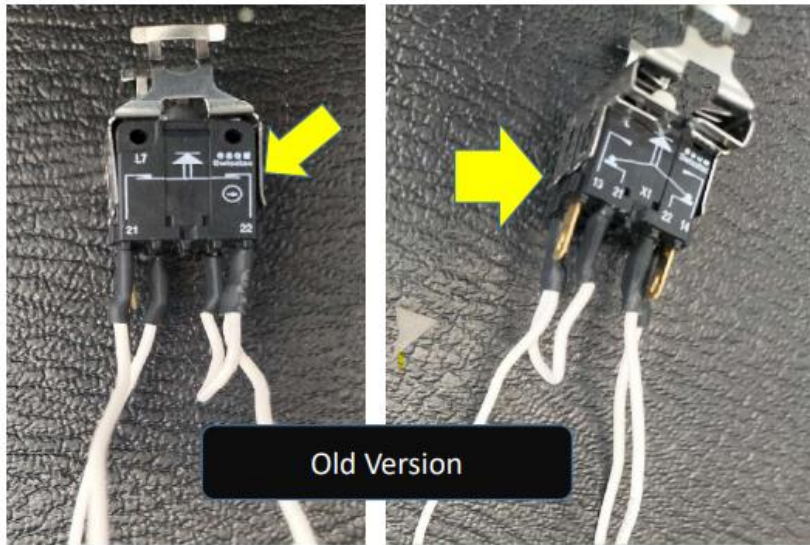
- Use the tool to fix the ring.



- Unplug old contacts by scissors.



- Plug new contacts following the correspondence between the old and the new button.



Connection Diagram:

21 old contact with 11 new one

22 old contact with 12 new one

21 old contact with 21+12 new one (bridge must be made)

22 old contact with 22 new one